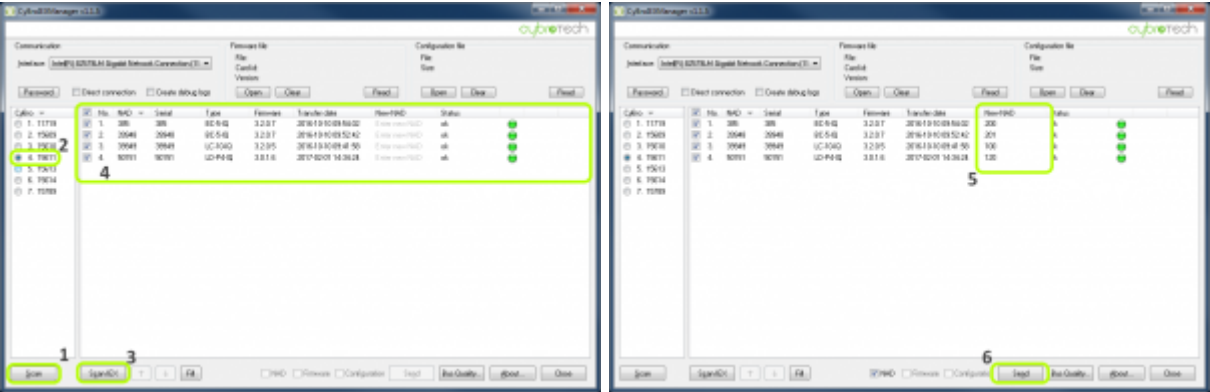


Manual HIQ device controllers address

Download, unzip and run CybroLEXManager [CyBrolexManager](#).

Pres “Scan” button [1] to discover all controllers in LAN. Select HC-IQ serial number on discovered controllers list [2] and press “Scan IEX” button [3]. All HIQ-DC should appear in main list-box [4].



In “New NAD” column [5] enter NAD addresses as per following table:

HIQ-DC	order	address
LC-10-IQ	1st	100
	2nd	101
	3rd	102
	4th	103
LD-X4-IQ*	1st	120
	2nd	121
	3rd	122
	4th	123
BC-5-IQ	1st	200
	2nd	201
SC-4X-IQ	1st	300
	2nd	301
	3rd	302
	4th	303
TH-X-IQ	1st	400
	2nd	401
	3rd	402
	4th	403
	5th	404
FC-1-IQ	1st	420
	2nd	421
	3rd	422
	4th	423
	5th	424

* LD-D8-IQ is detected as two separate modules.

And press “Send” button [6].

Note: If we press “Autoaddress” then the manual address will be corrupted and must be repeated.

From:
<http://wiki.hiq-home.com/> -

Permanent link:
http://wiki.hiq-home.com/doku.php?id=en:hiq_home:applications:configurator:manual_address

Last update: **2018/10/05 13:07**

