

HIQ Configurator

HIQ Configurator is a tool for setting the HIQ system configuration parameters. This includes device settings, timetable, automation, alarm and more. Controller Settings can be saved in a file. Hardware configuration is automatically detected during the installation.

To check the application without the hardware, run HIQ Simulator (included in HIQ Configurator install directory), keep it running, and click Autodetect.

HIQ Configurator works in a local network, internet access is not supported.

Download [HIQ Configurator](#).

(Some antivirus programs or company firewalls do not allow the downloading of *.exe files. You can download [file in .zip package](#) or you can disable the antivirus program.)

Lights + Blinds

Manual control of lights, dimmers, blinds and scenes.

Manual control	
On Off lights	Click on icon to toggle.
Dimmable lights	Adjust brightness with slider then click on icon to toggle on/off.
Blinds	Click on blind to set position.
Scenes	Click on scene icon to set affected lights and blinds to values stored in scene memory.
Settings	
On Off lights	Long-press to set auto off time in seconds; set to 0 to disable auto-off.

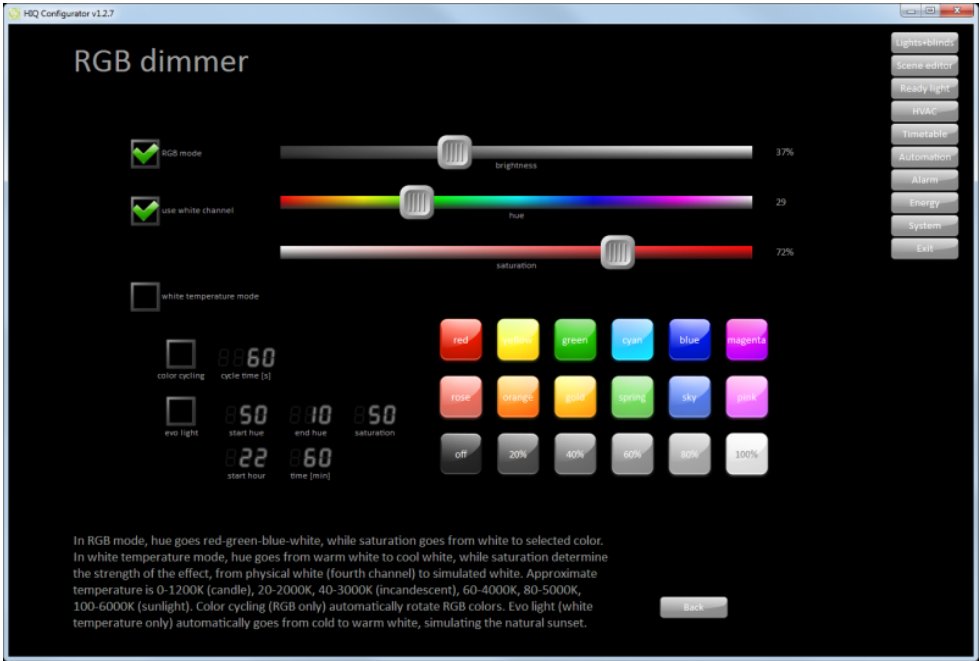


Dimmable lights	Long-press on numbers by dimmer icons to set minimum and maximum output level. Check Slow option to gradually enable intensity change for all dimmable lights.
Blinds	Long-press on upper / lower time to set rising / lowering time.
	Long-press on % to set intermediate position. Set to 0 for no intermediate position.
Scenes	Long-press on scene icon to memorize current lights/blinds state to scene memory. Only affected lights and blinds will be memorized. For setting affected devices see Scene editor .

RGB dimmer

RGB mode is used when red/green/blue/(white) LED stripe is connected to the dimmer. Instead of individual light, total brightness, saturation and hue are controlled.

Control
Sliders on top adjust brightness, saturation and hue of RGB lights. Check boxes on right side toggle RGB and White lamps
Color cycling button will start color cycling.
Colors buttons will set RGB lights to match button colour.
Off button will turn RGB off.
Settings
Cycle time sets color cycling speed (time for complete cycle in seconds).
Evo light check box enables white range simulation, from warm to cold white.

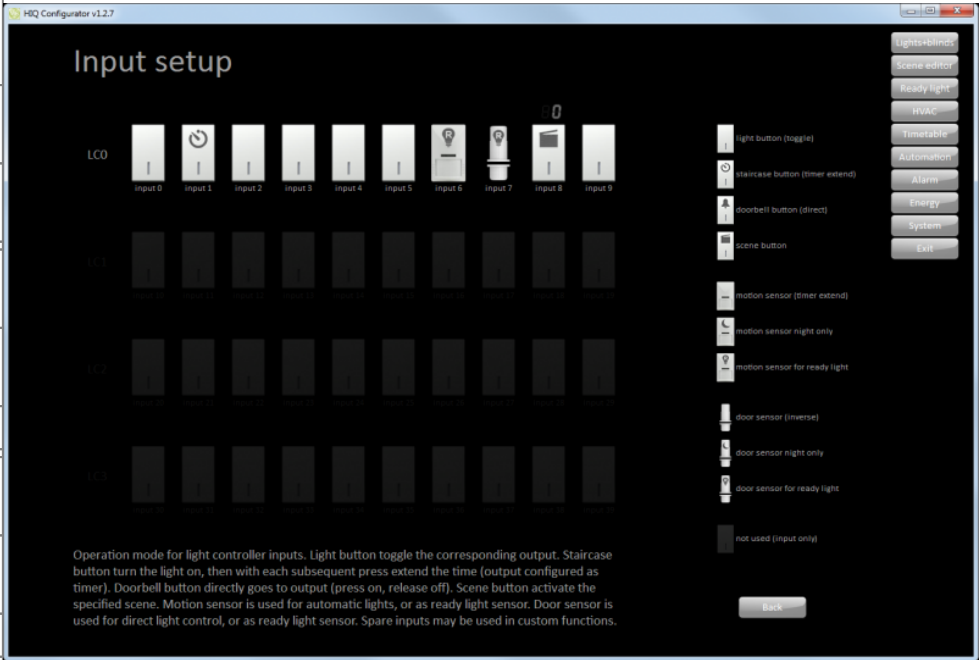


Input setup

Set mode of operation for each [Light controller \(LC\)](#) input.
Click on input icon to cycle between all options.
In scene mode corresponding scene has to be set.

Settings
Default is to toggle the corresponding output on and off with each keypress.

Timer extend is used to extend the time when output is configured as timer. Typical usage is for a staircase light.
Direct mode turns output on when button is pressed, off when released. Typical usage is for a door bell.
Scene button enables selected scene. Scene number is altered with a long press on scene number.
Timer extend mode extends timer with every press. Typical use is motion (PIR) sensor.
Timer extend/night only - the same as above, works only al low light conditions.
Motions sensor for ready light.
Inverse door (window) sensor - inverse function of “direct” (doorbell) button.
Inverse door sensor/night only - the same as above, works only al low light conditions.
Door sensor for ready light.
Input only - used for custom programming in Home controller .

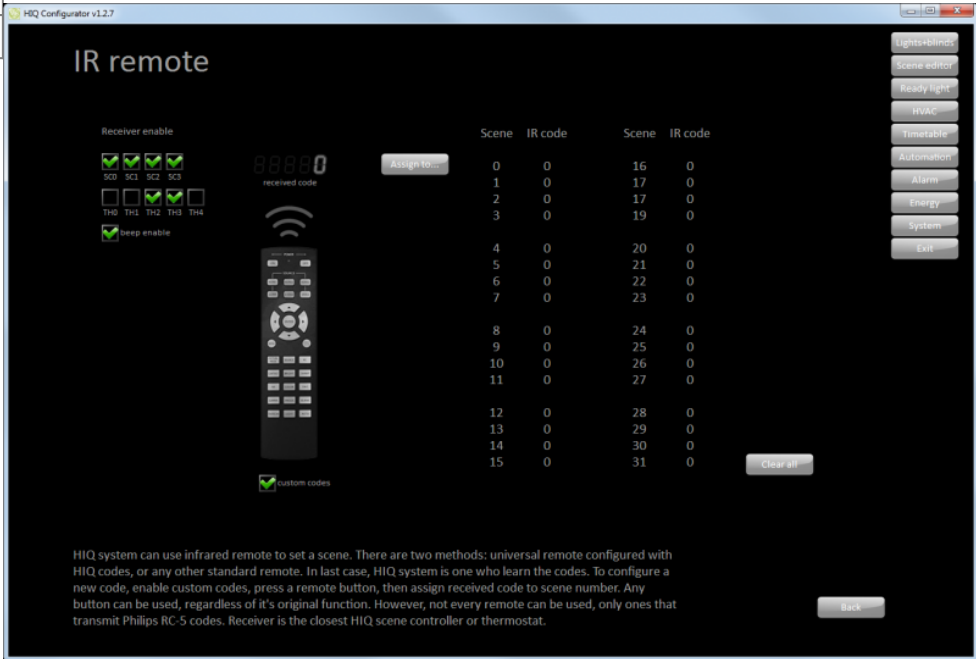


IR remote

HIQ scenes can be set from an IR remote controller. Any Philips (RC5) compatible remote controller can be used. Receiver is any scene controller or thermostat ([SC-4T-IQ](#), [SC-40-IQ](#), [TH-1M-IQ](#), [TH-1T-IQ](#) and [TH-3-IQ](#)).

Settings
Press remote controller button until the code is recognized, then assign it to a scene.

Enable or disable IR receiver in each scene controller and/or thermostat.
Enable or disable beep when valid IR code is received.



Scene editor

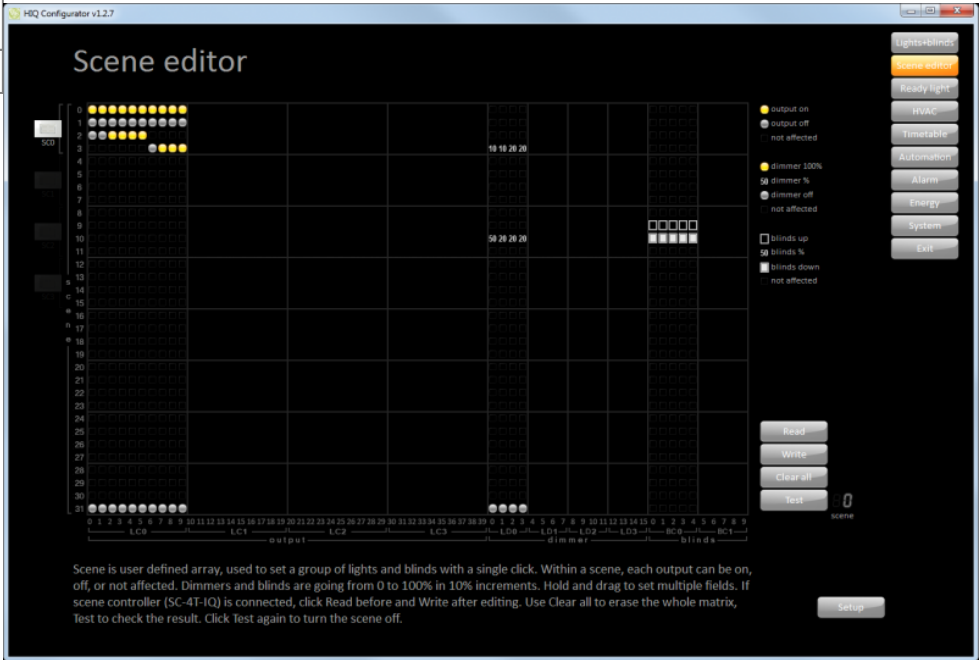
A Scene is a user defined array, used to set a group of lights and blinds to a predefined state. Within a scene, each output can be on, off, or not affected. Dimmer and blinds can be set from 0 to 100% in 10% increments.

Settings

Click on matrix to toggle between allowed options. Hold and drag to set multiple fields.

If scene controller (SC-4x-IQ) is connected, click Read before and Write after editing.

Use Clear all to erase the whole matrix.

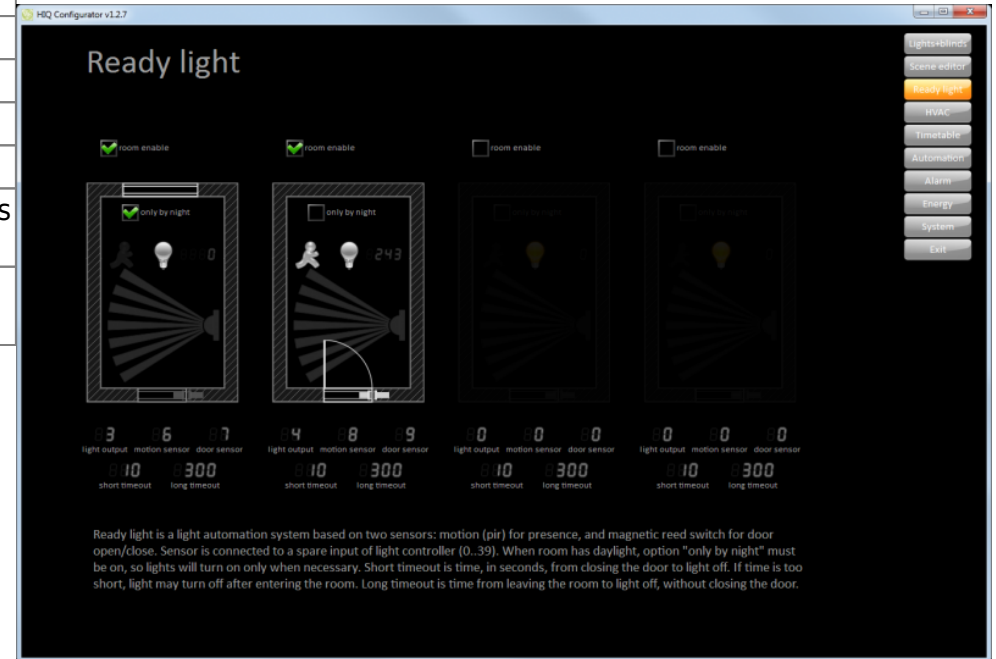


Ready light

Ready Light is a light automation system. Unlike common presence detectors, its design ensures almost perfect operation. The system is based on two sensors, passive infrared (PIR) for presence, and magnetic reed switch for door open/close. System can be used with a single sensor (PIR or reed), but is also limited to common functionality.

Settings

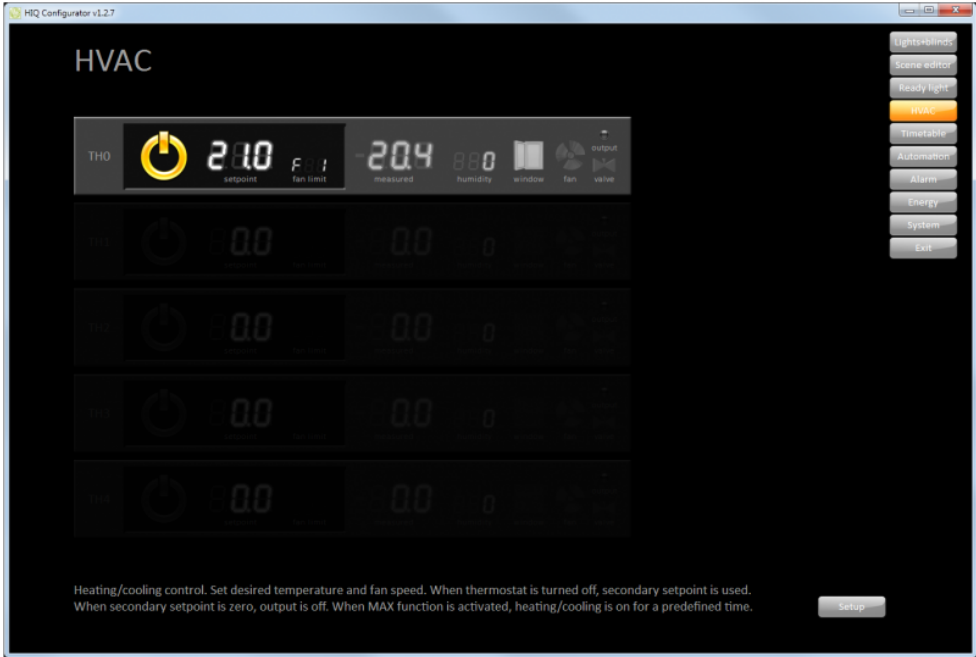
room enable	Enables Ready Light functionality.
only by night	Enables operation at low light conditions only.
light output	Set which light will be effected.
motion sensor	Set motion sensor (PIR) input.
door sensor	Set magnetic (reed) door sensor input.
short timeout	Set time from closing the door to the moment when lights will turn off.
long timeout	Set time from leaving the room to light off, without closing the door.



HVAC

Heating/cooling control.

Settings	
on/off	Toggle on/off mode. When OFF, secondary setpoint is used. When secondary setpoint is set to 0, output is off.
setpoint	Setpoint for ON mode.
fan limit	Toggle between preset fan modes.



HVAC setup

Heating/cooling setup.

Settings	
heating/cooling/off	Operation mode and energy source selection.
delay	Actuator delay time in seconds.

outdoor temperature wall temperature water temperature auxiliary temperature	If installed enable and select which thermostats external temperature sensor is measuring selected temperature.
temperature source	Select thermostat regulation temperature source: internal, external (connected to thermostat) or remote (connected to fan-coil controller).
display when off	Select what to display when thermostat is off. Available options are nothing, dashes or measured temperature.
available fan options	Select available fan options: F1 (low speed), F2 (medium speed), F3 (high speed) and MAX (max fan speed for predefined time).
write options to thermostat	Write thermostat options to device.
read back	Read thermostat options from device.
setpoint idle	Idle setpoint, used when thermostat is off. Set to 0 for disabling heating/cooling when thermostat is off.
setpoint lo limit	Lower limit for user setpoint setting.
setpoint hi limit	Higher limit for user setpoint setting.
max time	Timeout for fan max functionality.
temperature offset	Offset for temperature measurements.
hysteresis	Hysteresis for thermostat temperature regulation.
window switch	Enable window switch. When enabled opened window will turn heating/cooling off.
window switch	Enable window switch. When enabled opened window will turn heating/cooling off.
output active	Indicates if the output is currently active

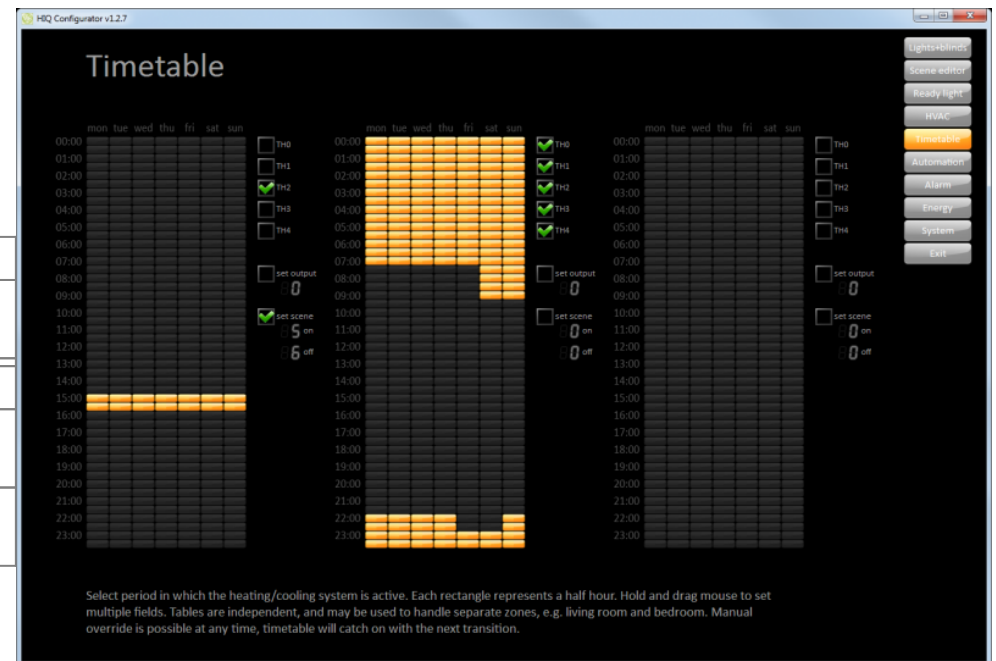


demand enable	Enable heating/cooling demand. When enabled, output on Home controller will be switched on (QX6 for heating and QX5 for cooling).
----------------------	---

Timetable

Timetable defines periods in which the heating/cooling system is active, when output (0-55) and/or scene is active. Tables are independent, and may be used to handle separate zones, e.g. living area or sleeping area. Manual override is possible at any time, timetable will catch on with the next transition.

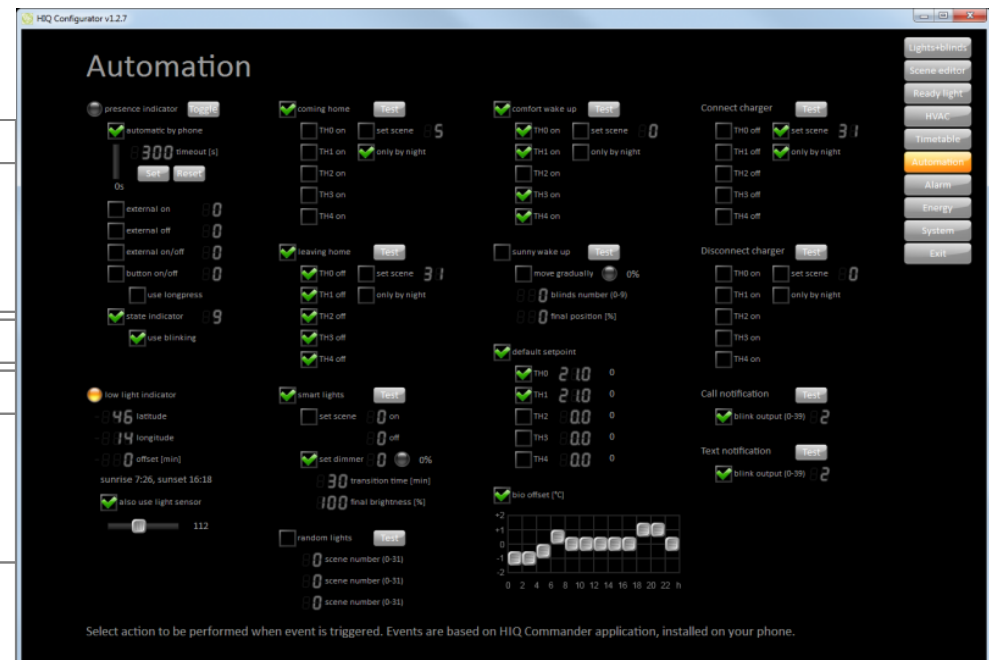
Settings	
matrix	Click to toggle active/idle state. Hold and drag mouse to set multiple fields. Each rectangle represents a half hour.
TH0 .. TH4	Select which thermostat is affected.
set output	Select and specify which output is activated on idle to active transition and deactivated at active to idle transition.
set scene	Select and specify which scene is activated on idle to active transition (on) and at active to idle transition. (off)



Automation

Events are based on the HIQ Commander application, which must be installed on your phone. Some phones may not support all events.

Settings	
Select tasks and actions to be performed automatically and/or when the event occurs.	
presence indicator	Used for alarm arming and automations.
low light indicator	Indication; Used for various automations.
latitude / longitude	Set geographic location for sunrise / sunset calculation. Can be set automatically from smartphone (if enabled). Also correct time zone must be set in "system → setup → time zone".
offset	Sunrise/sunset correction given in minutes, positive value moves sunrise later and sunset earlier.
also use light sensor	Use lightness sensor for low light calculation.
threshold	Lightness sensor threshold for day/night calculation.
coming home	Task is triggered when we came home - in connection with presence indicator.
TH0 on .. TH4 on	Select which thermostat is toggled to ON state.
set scene	Set scene to be activated at coming home task.
only by night	If enabled, scene will be triggered at low light.
leaving home	Task is triggered when we leave - in connection with presence indicator.
TH0 off .. TH4 off	Select which thermostat is toggled to ON state.
set scene	Set scene to be activated at leaving home task.
only by night	If enabled, scene will be triggered at low light.



smart lights	
set scene (on)	Set scene that will be activated at transition from day to night.
set scene (of)	Set scene that will be activated at transition from night to day.
set dimmer	Dimmed light that will activated at night
transition time	Transition time of selected dimmer light.
final brightness	Final brightness of selected dimmer light
random lights	When nobody is at home set random scenes to discourage snooping.
scene number	Set which scenes will be randomly triggered.
comfort wake up	Task is triggered at a predefined time before smartphone alarm time (time is set on the smartphone).
TH0 on .. TH4 on	Select affected thermostats.
set scene	Set scene to be activated at comfort wake up task.
only by night	If enabled, scene will be triggered only at low light.
sunny wake up	HIQ lifts blind in your bedroom. Task is triggered at a predefined time before smartphone alarm time (time is set on the smartphone).
move gradually	Selected blind will move gradually.
blinds number	Set affected blind.
final position	Final blind position.
default setpoint	When active, temperature setpoint adjustment is valid for about an hour, then it returns to the predefined, optimal temperature.
TH0 .. TH4	Select affected thermostat and set optimal temperature. The remaing time is shown in minutes.
bio offset	Temperature will follow your natural biological rhythm (chronotype).

<i>time-plot</i>	Set morning, evening or both temperatures to increase/decrease.
<i>slider</i>	Set temperature increase/decrease.
connect charger	Actions will be triggered when smartphone is connected to a charger.
TH0 off .. TH4 off	Select which thermostat is affected.
set scene	Set scene to be activated at connecting charger.
only by night	If enabled, scene will be triggered only at low light.
disconnect charger	Actions will be triggered when smartphone is disconnected from a charger.
TH0 on .. TH4 on	Select which thermostat is affected.
set scene	Set scene to be activated at disconnecting charger.
only by night	If enabled, scene will be triggered only at low light.
call notification	When you receive a call, selected light will turn on and off a couple of times, to get your attention when phone is away or silenced.
Output number	Set affected light output (0-55).
text notification	When you receive a text message, selected light will turn on and off a couple of times, to get your attention when phone is away or silenced.
Output number	Set affected light (0-55).

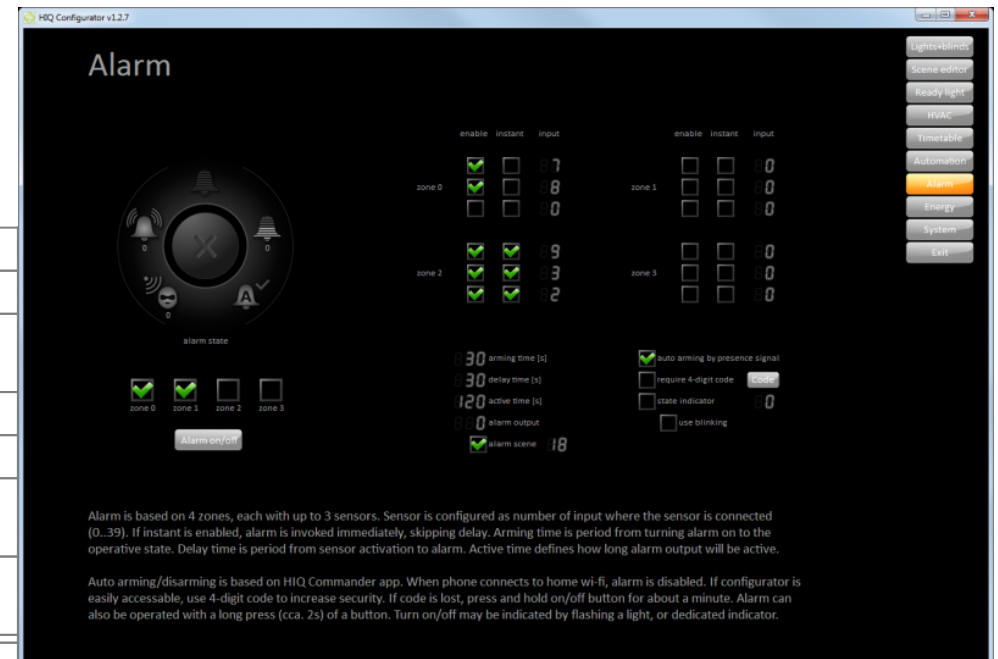
Alarm

Alarm is based on 4 zones, each with up to 3 sensors. Alarm states are:

- **OFF**: protection is off.
- **Arming**: protection is switching on, active timeout for leaving protected area.

- **Armed:** protection enabled.
- **Activating:** protection is on and movement detected - timeout allows to disengage alarm.
- **Alarm active:** intrusion detected, siren output active.
- **Expired:** delay time expired, siren is turned off (default 120s).

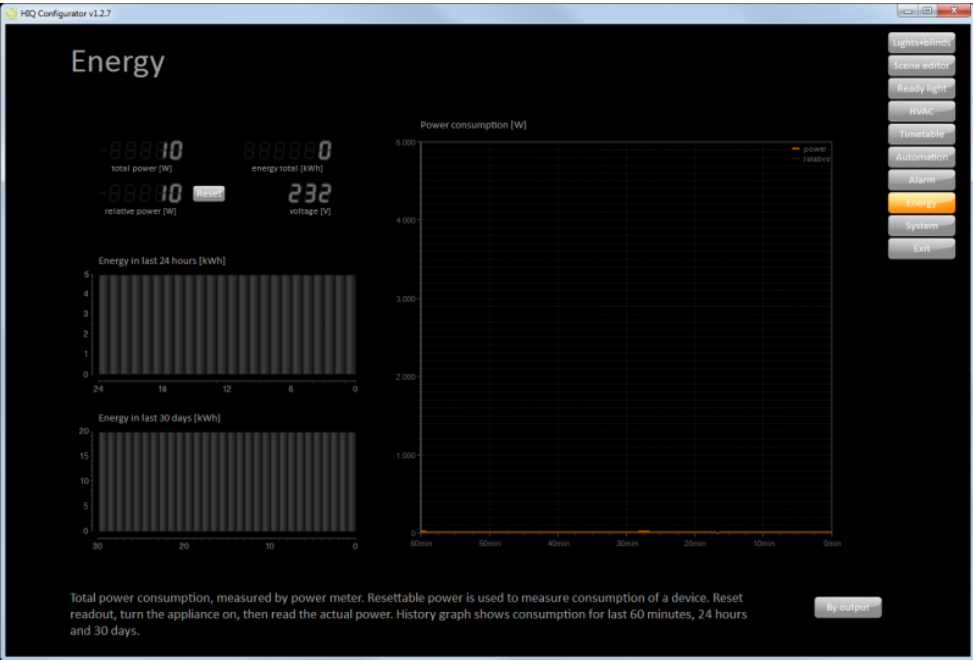
Control	
zone0 .. zone3	Select affected zone.
alarm on/off	Toggle alarm for selected zones. If “require 4-digit code” is enabled we have to enter the code first.
Settings	
enable	Enable or disable sensor on selected input.
instant	If enabled, alarm will be activated instantly, without “Activating” time. Use in places without presence.
input	Input which triggers the alarm. Motion (PIR) sensors are recommended but any input can be used.
arming time	Time from activating alarm to “Armed” state.
delay time	Time from intrusion detected to “alarm active” state.
active time	“Alarm active” time. When expired the siren will be switched off.
alarm output	Output for siren or other indicator.
alarm scene	“Alarm active” scene.
auto arming by presence signal	Automatic arming by presence signal.
require 4-digit code	Change 4-digit arming/disarming code. Valid only in HIQ configurator.
state indicator	Alarm state indicator. Blinks when arming, ON when armed. Outputs 0-39 can be used.
use blinking	Alarm state indicator blinks when “Arming” is activated and when alarm is deactivated.



Energy

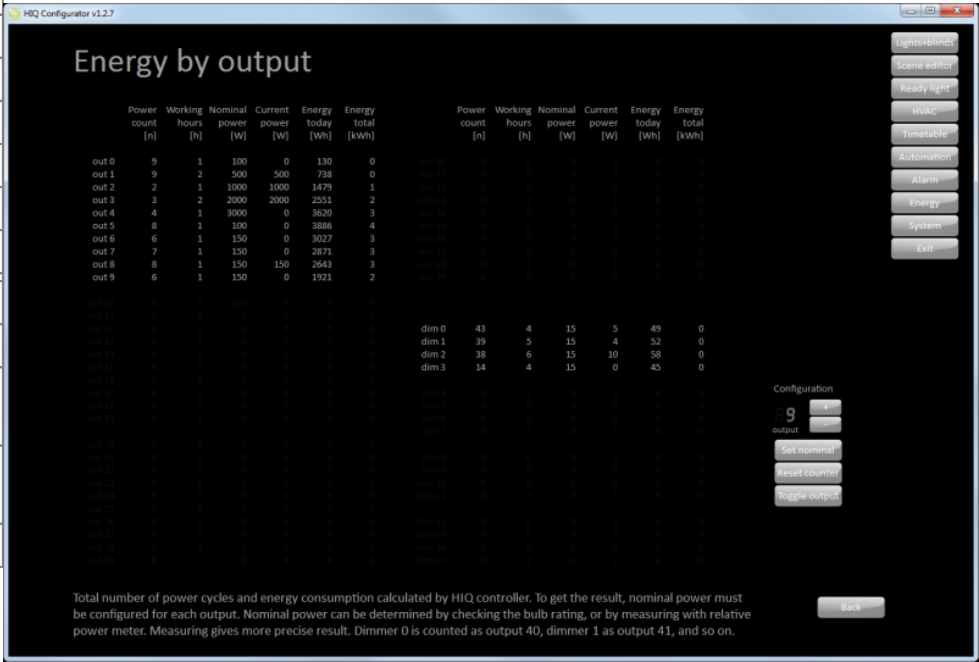
Energy monitoring is the first step to efficient energy usage. Once knowing how much energy something is using, one can make a rational strategy for saving.

Overview	
total power	Current power.
energy total	Used energy since energy counter installation (or reset).
relative power	Toggle between preset fan modes.
voltage	Current system voltage.
energy in last 24 hours	Graph of used energy in last 24 hours.
energy in last 30 days	Graph of used energy in last 30 days.
Power consumption	Power consumption in last hour. (HIQ Configurator must run.)
Settings	
Reset	<div>Reset energy consumption, to measure the amount of electricity something is using: 1. Turn the output off. 2. Reset relative power. 3. Turn the output on. A few seconds later, measured relative power is displayed. If the reading is not stable, temporary turn off any load which may consume variable amount of power. Measured rating may be used to set the nominal power on 'Energy by output' page.</div>



Energy by output

Overview	
Power count	How many times the output is turned on.
Working hours	Total number of hours the output spent in on state
Nominal power	Nominal power configured by user.
Current power	Output power at the current moment.
Energy today	Total energy used from last midnight.
Energy total	Total energy consumed by the specific output.
Configuration	
output	Select the target output with +/- button.
Set nominal	Set nominal power. It can be measured by resettable power meter or read from the label.
Reset counter	Power count, working hours and energy total can be reset.
Toggle output	Toggle selected output.

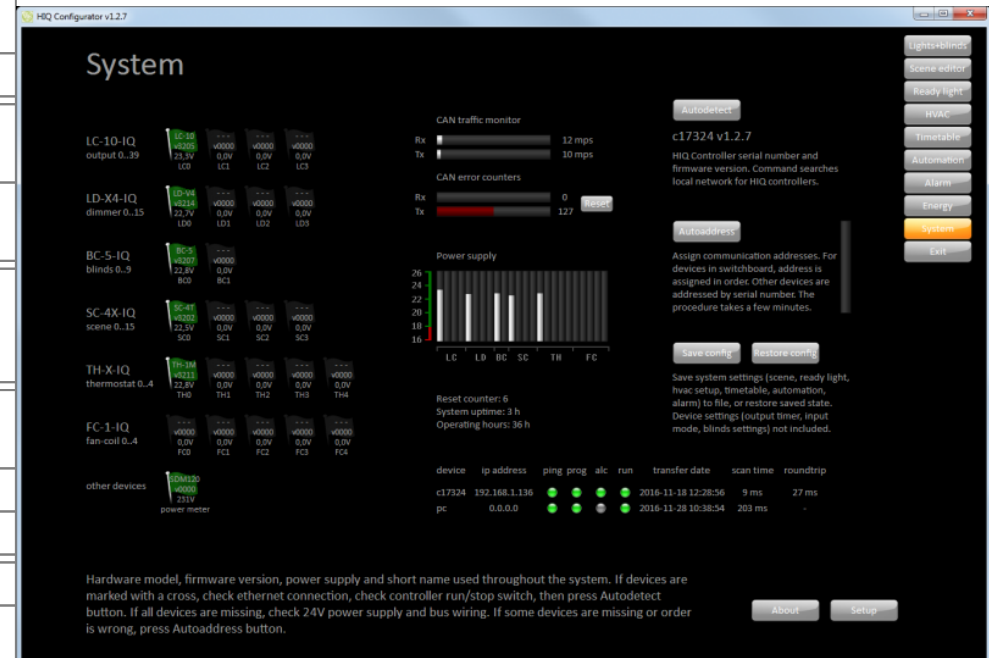


System

System page offers system overview and configuration tools.

Overview	
System	Toggle on/off mode. When OFF, secondary setpoint is used. When secondary setpoint is set to 0, output is off.

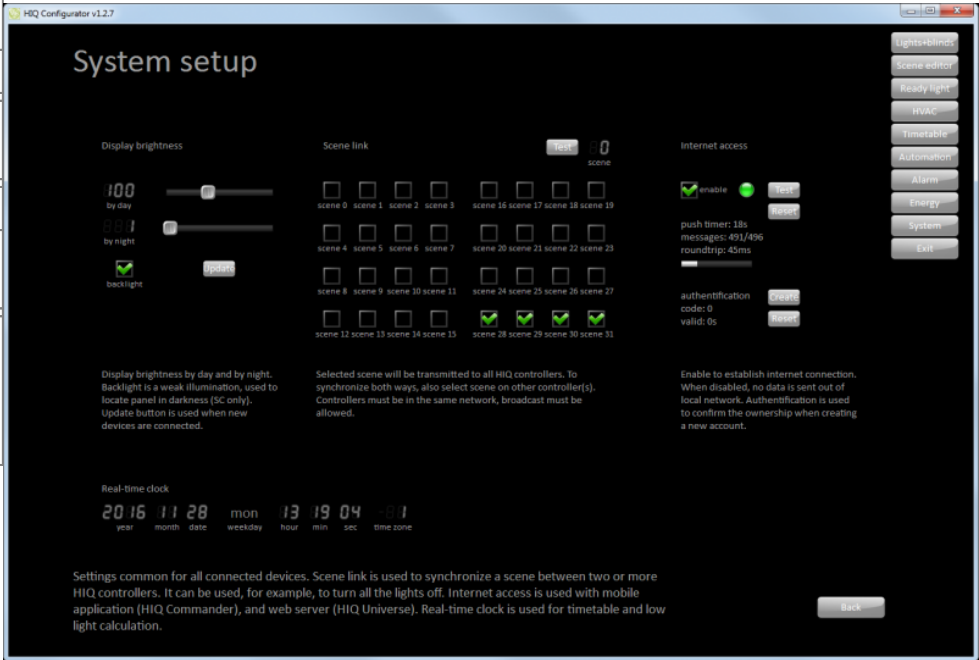
CAN traffic monitor	Setpoint for ON mode.
Rx/Tx	CAN receive (Rx) and transmit (Tx) speed.
CAN error counters	Setpoint for ON mode.
Rx/Tx	Errors on receive (Rx) and transmit (Tx) side. Counter can be reset with “Reset” button.
Power supply	Monitoring of voltage on HIQ modules. The voltage must be between 18 and 26V. If the voltage is lower check contacts and connections.
Reset counter:	Total number of Home controller resets (i.e. power downs).
System uptime:	Time from last system reset.
Operating hours:	Total operating hours.
Configuration	
Autodetect	Press to select your Home controller. If there are many controllers you have to choose appropriate serial number (written on the top of Home controller). manual_hc-iq_detect
Autoaddress	Used to get all modules in order. Has to be done on system commissioning or on system hardware change. manual_hiq_device_controllers_address
Save config	System settings are saved in HIQ Configurator installation dir, file “Settings.xml”
Restore config	Uploads setting from “Settings.xml” file in HIQ Configurator installation dir.



System setup

Settings

Display brightness	Day/night Brightness of scene controllers and thermostats.
backlight	Illumination on scene controllers.
Scene link	Selected scene will be transmitted to all Home controllers connected in the same local network.
Internet access	Enable /disable internet connection.
authentification	Randomly created code used for registration of Home controller on HIQ Universe .
Real-time clock	Clock is automatically synchronised with your smartphone. Time zone is set in this menu or retrieved from “location information” from your smartphone.



From:
<http://wiki.hiq-home.com/> -

Permanent link:
http://wiki.hiq-home.com/doku.php?id=en:hiq_home:applications:configurator&rev=1538744766

Last update: **2018/10/05 13:06**

