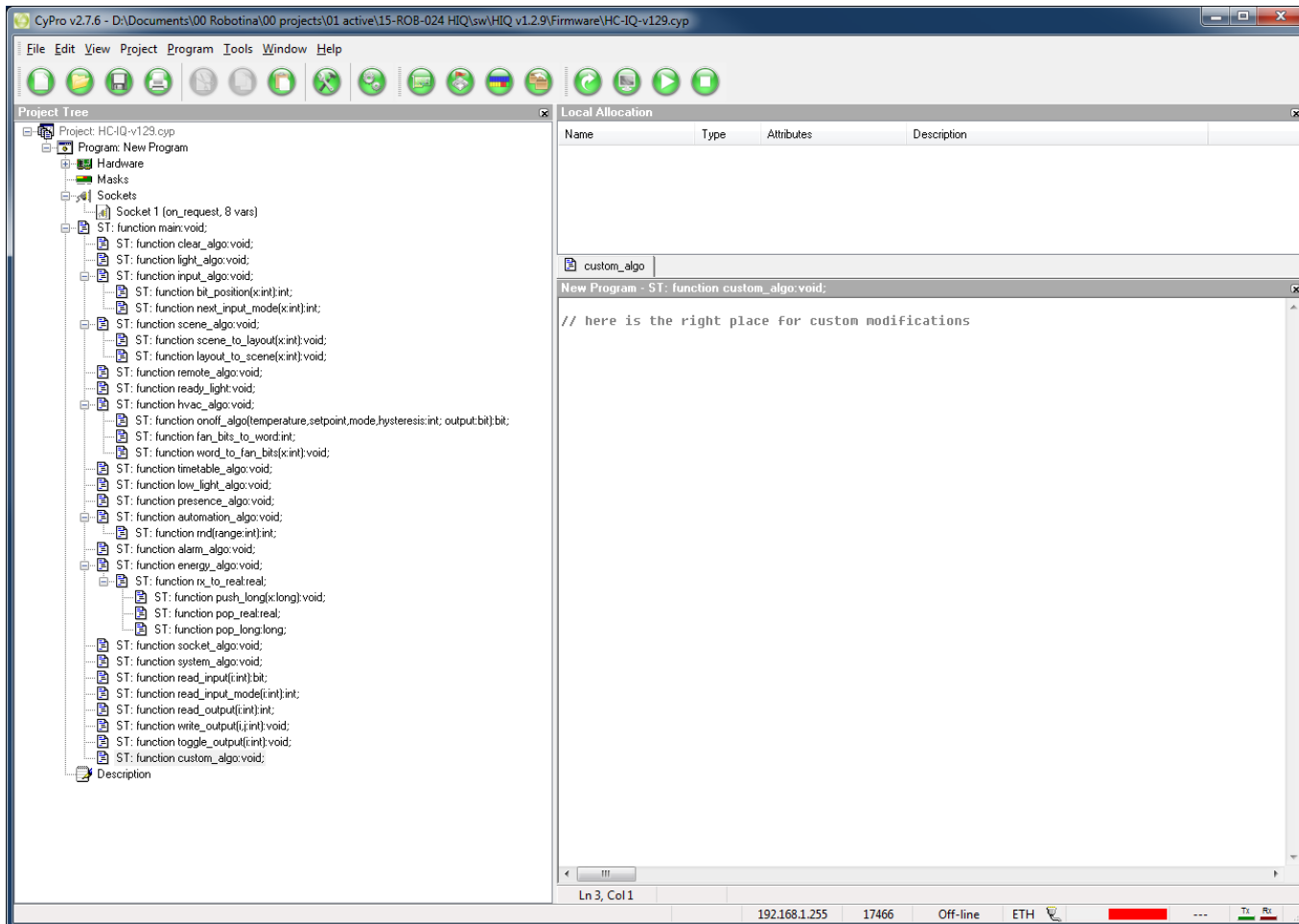


# Custom functionalities

Custom functionality has to be added in CyPro IDE. In HIQ project there is function "custom\_algo" already prepared.



From: <https://wiki.hiq-home.com/> -

Permanent link: [https://wiki.hiq-home.com/doku.php?id=en:hiq\\_home:methods:customization:custom](https://wiki.hiq-home.com/doku.php?id=en:hiq_home:methods:customization:custom)

Last update: 2018/10/05 13:12

