

Wireless gateway

Wireless gateway



| | |
|--|-------------------------------|
| Model number: | GW-WN-W |
| Mounting: | field, on wall |
| Dimensions: | 92 × 110(300) × 35 mm |
| Used for wireless communication with: | |
| Wireless bridge | BR-WN-W |
| Wireless load managers | SC1-WN-F |
| | RL1-WN-W |
| | PM1-WN-D |
| | PM1-WN-W |
| Require: | |
| Serial converter | CAD-232-A2-IQ |

General description

Wireless gateway purpose is to interface between the HEMS controller and wireless devices.

The device is supplied from external supply (12-24 VDC/VAC); its role in the network is Coordinator, i.e. it forms an active part of creating the network and maintaining wireless traffic from and to other wireless devices.

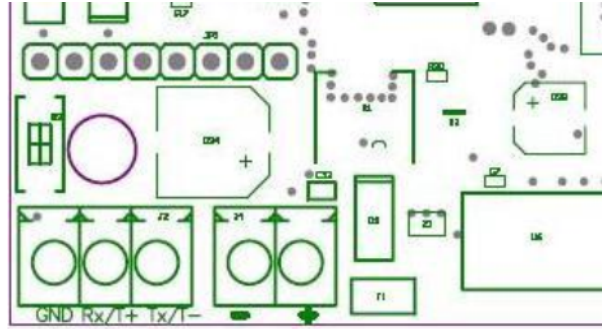
Technical specification

| | |
|----------------------------|----------------------------------|
| Power supply | 12 - 24 VDC, 100 mA |
| | 12 - 24 VAC, 50 / 60 Hz, 2,4 VA |
| Wireless characteristics | 2405 - 2480 MHz |
| | DSSS modulation |
| | Nominal transmission Power 0 dBm |
| | IEEE 802.15.4 compliant |
| | Stack EmberZNet3.5.x |
| | Stack version 0 |
| | Proprietary profile ID |
| Proprietary encryption key | |
| Protection | IP55 |

Terminals

| | |
|----------------|---------------------|
| GW-WN-W | Power supply |
| + | + |

| GW-WN-W | Power supply |
|----------------|----------------------|
| - | - |
| GW-WN-W | CAD-232-A2-IQ |
| GND | C |
| Rx/T+ | A |
| Tx/T- | B |



From:
<http://wiki.hiq-home.com/> -

Permanent link:
http://wiki.hiq-home.com/doku.php?id=en:hiq_hw:gw-wn&rev=1566387004

Last update: **2019/08/21 11:30**

