

Wireless gateway

Wireless gateway



Model number:	GW-WN-W
Mounting:	field, on wall
Dimensions:	92 × 110(300) × 35 mm
Used for wireless communication with:	
Wireless bridge	BR-WN-W
Wireless load managers	SC1-WN-F
	RL1-WN-W
	PM1-WN-D
	PM1-WN-W
Require:	
Serial converter	CAD-232-A2-IQ

General description

Wireless gateway purpose is to interface between the HEMS controller and wireless devices.

The device is supplied from external supply (12-24 VDC/VAC); its role in the network is Coordinator, i.e. it forms an active part of creating the network and maintaining wireless traffic from and to other wireless devices.

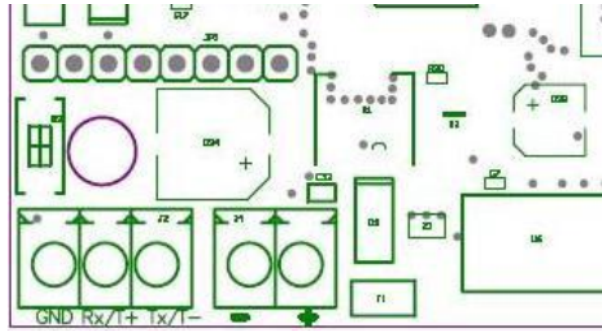
Technical specification

Power supply	12 - 24 VDC, 100 mA
	12 - 24 VAC, 50 / 60 Hz, 2,4 VA
Wireless characteristics	2405 - 2480 MHz
	DSSS modulation
	Nominal transmission Power 0 dBm
	IEEE 802.15.4 compliant
	Stack EmberZNet3.5.x
	Stack version 0
	Proprietary profile ID
Proprietary encryption key	
Protection	IP55

Terminals

GW-WN-W	Power supply
+	+

GW-WN-W	Power supply
-	-
GW-WN-W	CAD-232-A2-IQ
GND	C
Rx/T+	A
Tx/T-	B



From:
<http://wiki.hiq-home.com/> -

Permanent link:
http://wiki.hiq-home.com/doku.php?id=en:hiq_hw:gw-wn-w&rev=1565779873

Last update: **2019/08/14 10:51**

