

# Light dimmers driver

## 4 channel driver for universal lights dimmers



Model number:	<b>LD-P4-IQ</b>
Mounting:	DIN rail, 2M / 35 mm
Dimensions:	36×108×58mm

## Applications

- 4 individual 230 VAC dimmable lights

## Features

- button or potentiometer input
  - auto-detect input type
  - potentiometer auto-range
- External [LUD-12](#) power drivers with:
  - Automatic load detection (L or C loads)
  - Electronic overload protection
  - Over-temperature shutdown

## General description

The universal lights dimmer LD-P4-HIQ is 4 channels controller for [LUD-12](#) universal light dimmers. LD-P4-HIQ supports local control buttons or potentiometers connected directly to it, which can be mixed and are auto-detected.

Many features are available in the stand alone mode, while advanced features like scenes,

scheduling, smartphone operation, internet connection are only available when connected to the appropriate Home Controller.

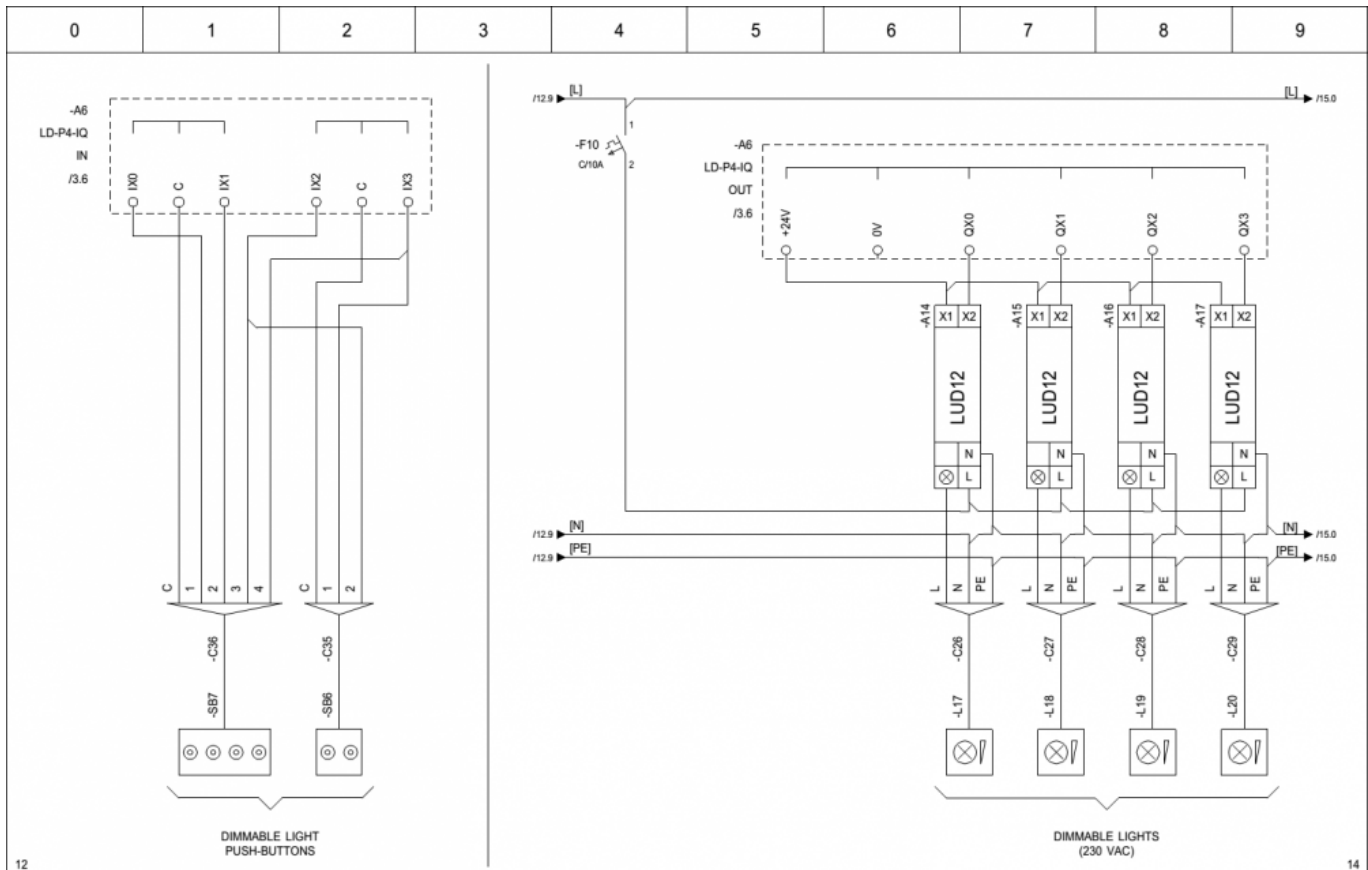
**LUD-12** universal dimmer can be used for any type of dimmable 230 VAC lights. It automatically detects load type (L loads and C loads). Dimmer is electronically protected against overload and over-temperature.

## Technical specification

Analog inputs:	10k / 1-10 V; auto-range
Digital inputs:	internal pull-up, 12V, 2mA
PWM output:	
Power supply:	24V/??mA
Ingress protection:	IP20
Operating temperature:	0..45°C
Storage temperature:	-20..75°C
Relative humidity:	0..95% n/c

## Terminals

Power supply / Drivers common (X1)	<b>+24V</b>	<b>1</b>	Power supply	Digital input 0	<b>7</b>	<b>IX0</b>	Light 0 push-button
Power supply	<b>0V</b>	<b>2</b>		Inputs common	<b>8</b>	<b>C</b>	Push-buttons common
Driver 0 PWM input (X2)	<b>QX0</b>	<b>3</b>	PWM output 0	Digital input 1	<b>9</b>	<b>IX1</b>	Light 1 push-button
Driver 1 PWM input (X2)	<b>QX1</b>	<b>4</b>	PWM output 1	Digital input 2	<b>10</b>	<b>IX2</b>	Light 2 push-button
Driver 2 PWM input (X2)	<b>QX2</b>	<b>5</b>	PWM output 2	Inputs common	<b>11</b>	<b>C</b>	Push-buttons common
Driver 3 PWM input (X2)	<b>QX3</b>	<b>6</b>	PWM output 3	Digital input 3	<b>12</b>	<b>IX3</b>	Light 3 push-button



			Last changed by <b>GK</b> Last changed 14/9/2015 File name 14/9/2015	Robotina d.o.o. OIC Kozina 38 SI-6240 Kozina	HC-IQ Automation LD-P4-IQ Inputs / Outputs HIQ wiring	Drawing number <b>001</b>	Installation =
Rev Revision text	Signature	Date	Pages 17			Location +	Page number 13

From:  
<https://wiki.hiq-home.com/> -

Permanent link:  
[https://wiki.hiq-home.com/doku.php?id=en:hiq\\_hw:ld-p4-iq&rev=1563950430](https://wiki.hiq-home.com/doku.php?id=en:hiq_hw:ld-p4-iq&rev=1563950430)

Last update: **2019/07/24 06:40**

