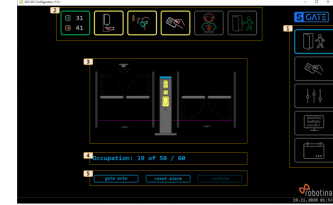


Configurator

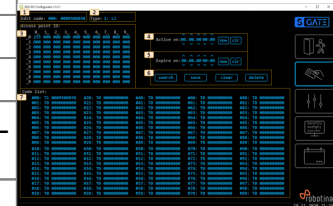
Overview

1	Page navigation
Overview page	
Access code management page	
Settings page	
UI settings page	
Events overview page	
2	Entry procedure steps status
count_status	
disinfect_status	
temperature_status	
code_status	
confirmation_status	
entry_status	
3	schematics
4	Occupation counts
Occupation count, click to correct the actual number of visitors.	
Occupation limits L1 / L2	
5	Command buttons
Gates Auto / Manual mode toggle	
Alarm reset button	
Confirmation button	



Access Code management

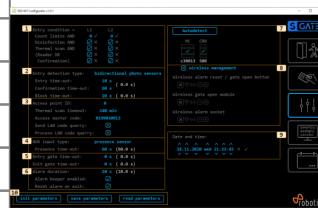
1	Edited code
Click to enter the code you want to edit.	
2	Code type
Click to select edited code type. Options are L1 (level 1), L2 (level 2) or UL (unlimited).	
3	Access point limits
Click to enter count limits for each access point.	
If SG3 is the only access point in the local network, enter only in position 00 (upper left field). Enter the allowed number of entries or 255 for unlimited.	
4	Code activation date
Set code activation date and time. Set all to 0 for the code that is active immediately.	
8	Code expiration date
Set code expiration date and time. Set all to 0 for a code that has no validity limit.	
6	Edit code commands



1	Edited code
[search] = Find settings for "edit code".	
[save] = Saves the code being edited with all settings.	
[clear] = Clear all edit settings.	
[delete] = Delete edit code from the list.	
7	Codes list
List of access codes on the controller. Clicking on the code picks up all the code values in the edit fields above.	

Settings

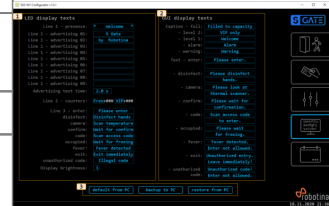
1	Entry conditions
Count limits: set count limits for L1 and L2; 0=not limited	
Disinfection: select if hand disinfection is required	
Thermal scan: select if body temperature scan is required s	
Reader: select if code reader is required	
Confirmation: select if confirmation is required	
2	Entry detection settings
Entry detection type: select entry detection type	
Entry time-out: max time between consecutive steps	
Confirmation time-out: max time allowed for confirmation	
Block time-out: time for hi temperature or wrong code alert	
After all time-outs entry procedure restarts.	
3	Code reader settings
Access point ID: ID for built in access point. Used when S Gate is part of bigger Access control system, if not, leave 0.	
Thermal scan timeout: set the time for which the system remembers the temperature scan for the code user	
Access master code: set the code for local codes management	
Send LAN code query: set to enable sending code queries to other access controllers on LAN	
Process LAN code query: set to process queries from other controllers on LAN	
4	Auxiliary input settings
AUX input type: set auxiliary input function to presence sensor or to call button	
Presence / Call time-out: aux function timeout	
5	Gates settings
Entry gate time-out: set entry gate signal timeout, 0=no entry gate	
Exit gate time-out: set exit gate signal timeout, 0=no exit gate	
6	Alarm settings
Alarm duration: alarm active duration time	
Alarm beeper enabled: set to enable continuous beep during alarm	
Reset alarm on exit: set to reset alarm when exit is detected	
7	Hardware overview
Control system overview	



1	Entry conditions
Select [Autodetect] to find S Gate controller in LAN (when red Xes are displayed)	
8	Wireless devices management
[] wireless management: set to enable management of wireless devices	
first icon: wireless device paired status (x=none, ✓=paired)	
second icon: displaying wireless signal strength	
third icon: wireless device operating as repeater (click to enable).	
[-]: delete wireless device	
[+]: add wireless device	
9	Controller date and time settings
set S Gate controller date and time.	
10	Parameters management
[init parameters]: initialize all parameters to factory default values	
[save parameters]: save all parameters to permanent memory	
[read parameters]: read all parameters from permanent memory	

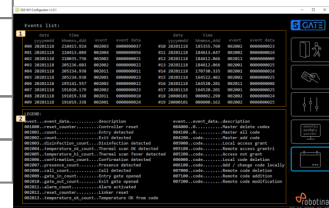
User interfaces settings

1	LED display texts settings
Click to set the texts displayed on the LED display. Edit text alignment with spaces.	
2	GUI display texts settings
Click to set the texts that appear on the graphical user interface. The text will be centered automatically.	



Events overview

1	Events list
The last 20 event codes and data are displayed. Event #00 happened last.	
2	Events legend
Legend for event code and data.	



From:
<https://wiki.hiq-universe.com/> -

Permanent link:
<https://wiki.hiq-universe.com/doku.php?id=en:sg3:configurator>

Last update: **2020/11/30 08:23**

