

Configurator

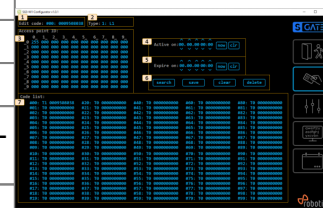
Overview

| | |
|---|-------------------------------------|
| 1 | Page navigation |
| Overview page | |
| Access code management page | |
| Settings page | |
| UI settings page | |
| Events overview page | |
| 2 | Entry procedure steps status |
| count_status | |
| disinfect_status | |
| temperature_status | |
| code_status | |
| confirmation_status | |
| entry_status | |
| 3 | schematics |
| 4 | Occupation counts |
| Occupation count, click to correct the actual number of visitors. | |
| Occupation limits L1 / L2 | |
| 5 | Command buttons |
| Gates Auto / Manual mode toggle | |
| Alarm reset button | |
| Confirmation button | |



Access Code management

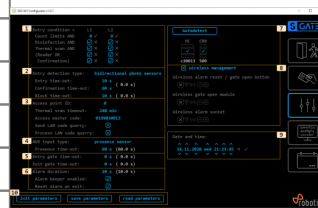
| | |
|---|-----------------------------|
| 1 | Edited code |
| Click to enter the code you want to edit. | |
| 2 | Code type |
| Click to select edited code type. Options are L1 (level 1), L2 (level 2) or UL (unlimited). | |
| 3 | Access point limits |
| Click to enter count limits for each access point. | |
| If SG3 is the only access point in the local network, enter only in position 00 (upper left field). Enter the allowed number of entries or 255 for unlimited. | |
| 4 | Code activation date |
| Set code activation date and time. Set all to 0 for the code that is active immediately. | |
| 8 | Code expiration date |
| Set code expiration date and time. Set all to 0 for a code that has no validity limit. | |
| 6 | Edit code commands |



| | |
|---|--|
| 1 | Edited code |
| [search] | = Find settings for "edit code". |
| [save] | = Saves the code being edited with all settings. |
| [clear] | = Clear all edit settings. |
| [delete] | = Delete edit code from the list. |
| 7 | Codes list |
| List of access codes on the controller. Clicking on the code picks up all the code values in the edit fields above. | |

Settings

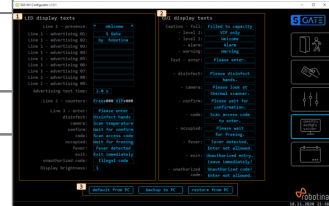
| | |
|---|---------------------------------|
| 1 | Entry conditions |
| Count limits: set count limits for L1 and L2; 0=not limited | |
| Disinfection: select if hand disinfection is required | |
| Thermal scan: select if body temperature scan is required s | |
| Reader: select if code reader is required | |
| Confirmation: select if confirmation is required | |
| 2 | Entry detection settings |
| Entry detection type: select entry detection type | |
| Entry time-out: max time between consecutive steps | |
| Confirmation time-out: max time allowed for confirmation | |
| Block time-out: time for hi temperature or wrong code alert | |
| After all time-outs entry procedure restarts. | |
| 3 | Code reader settings |
| Access point ID: ID for built in access point. Used when S Gate is part of bigger Access control system, if not, leave 0. | |
| Thermal scan timeout: set the time for which the system remembers the temperature scan for the code user | |
| Access master code: set the code for local codes management | |
| Send LAN code query: set to enable sending code queries to other access controllers on LAN | |
| Process LAN code query: set to process queries from other controllers on LAN | |
| 4 | Auxiliary input settings |
| AUX input type: set auxiliary input function to presence sensor or to call button | |
| Presence / Call time-out: aux function timeout | |
| 5 | Gates settings |
| Entry gate time-out: set entry gate signal timeout, 0=no entry gate | |
| Exit gate time-out: set exit gate signal timeout, 0=no exit gate | |
| 6 | Alarm settings |
| Alarm duration: alarm active duration time | |
| Alarm beeper enabled: set to enable continuous beep during alarm | |
| Reset alarm on exit: set to reset alarm when exit is detected | |
| 7 | Hardware overview |
| Control system overview | |



| | |
|---|--|
| 1 | Entry conditions |
| Select [Autodetect] to find S Gate controller in LAN (when red Xes are displayed) | |
| 8 | Wireless devices management |
| [] wireless management: set to enable management of wireless devices | |
| first icon: wireless device paired status (x=none, ✓=paired) | |
| second icon: displaying wireless signal strength | |
| third icon: wireless device operating as repeater (click to enable). | |
| [-]: delete wireless device | |
| [+]: add wireless device | |
| 9 | Controller date and time settings |
| set S Gate controller date and time. | |
| 10 | Parameters management |
| [init parameters]: initialize all parameters to factory default values | |
| [save parameters]: save all parameters to permanent memory | |
| [read parameters]: read all parameters from permanent memory | |

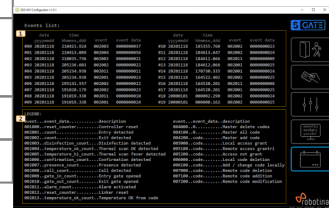
User interfaces settings

| | |
|--|-----------------------------------|
| 1 | LED display texts settings |
| Click to set the texts displayed on the LED display. Edit text alignment with spaces. | |
| 1 | GUI display texts settings |
| Click to set the texts that appear on the graphical user interface. The text will be centered automatically. | |



Events overview

| | |
|--|----------------------|
| 1 | Events list |
| The last 20 event codes and data are displayed. Event #00 happened last. | |
| 2 | Events legend |
| Legend for event code and data. | |



From:
<https://wiki.hiq-home.com/> -

Permanent link:
<https://wiki.hiq-home.com/doku.php?id=en:sg3:configurator&rev=1606476378>

Last update: **2020/11/27 11:26**

