

# Typical installations

## Small shop, pharmacy

### Requirements

- limited number of visitors
- one passage for access and exit
- automatic door
- required temperature measurement
- required disinfection

### Installation

- SGate is installed at the entrance from the outside of the automatic door.
- Entry detection sensors are mounted on one of the sides or on an additional carrier depending on the physical layout of the SGate relative to the door..
- The automatic door opening signal is connected to the SGate and in parallel to the internal automatic opening sensor.
- The staff has a wireless button to confirm alarms or to open the door manually in case of exceptions.



### Settings



## Department store

### Requirements

- limited number of visitors
- one-way entrance with swing gate
- separate exit
- required temperature measurement
- required disinfection
- staff can access it by scanning the code even when the count limit 1 is exceeded
- staff do not need to scan the temperature 4 hours after a successful scan
- hand disinfection is not mandatory for employees

## Installation

- SGate is installed at the entrance from the outside of the swing gate.
- Entry detection sensor is mounted on side of SGate or on an additional carrier depending on the physical layout of the SGate relative to the gate.
- Security guard has a wireless button to confirm alarms or to open the door manually in case of exceptions.



## Settings

**SG3-M1 Configurator v1.0.1**

**Entry condition =**

	L1	L2
Count limits AND	50 ✓	100 ✓
Disinfection AND	✓ X	X ✓
Thermal scan AND	✓ X	✓ X
(Reader OR Confirmation)	X ✓	✓ X

**Entry detection type:** 2 x one-way photo sensors

Entry time-out: 10 s ( 0.0 s)

Confirmation time-out: 10 s ( 0.0 s)

Block time-out: 10 s ( 0.0 s)

Access point ID: 0

Thermal scan timeout: 240 min

Access master code: 0199030013

Send LAN code query: ☒

Process LAN code query: ☒

**AUX input type:** call button

Call time-out: 60 s (60.0 s)

Entry gate time-out: 0 s ( 0.0 s)

Exit gate time-out: 0 s ( 0.0 s)

Alarm duration: 10 s (10.0 s)

Alarm beeper enabled: ☒

Reset alarm on exit: ☒

**Autodetect**

MC CR0

c30013 500

☒ wireless management

Wireless alarm reset / gate open button ☒ ☒

Wireless gate open module ☒ ☒

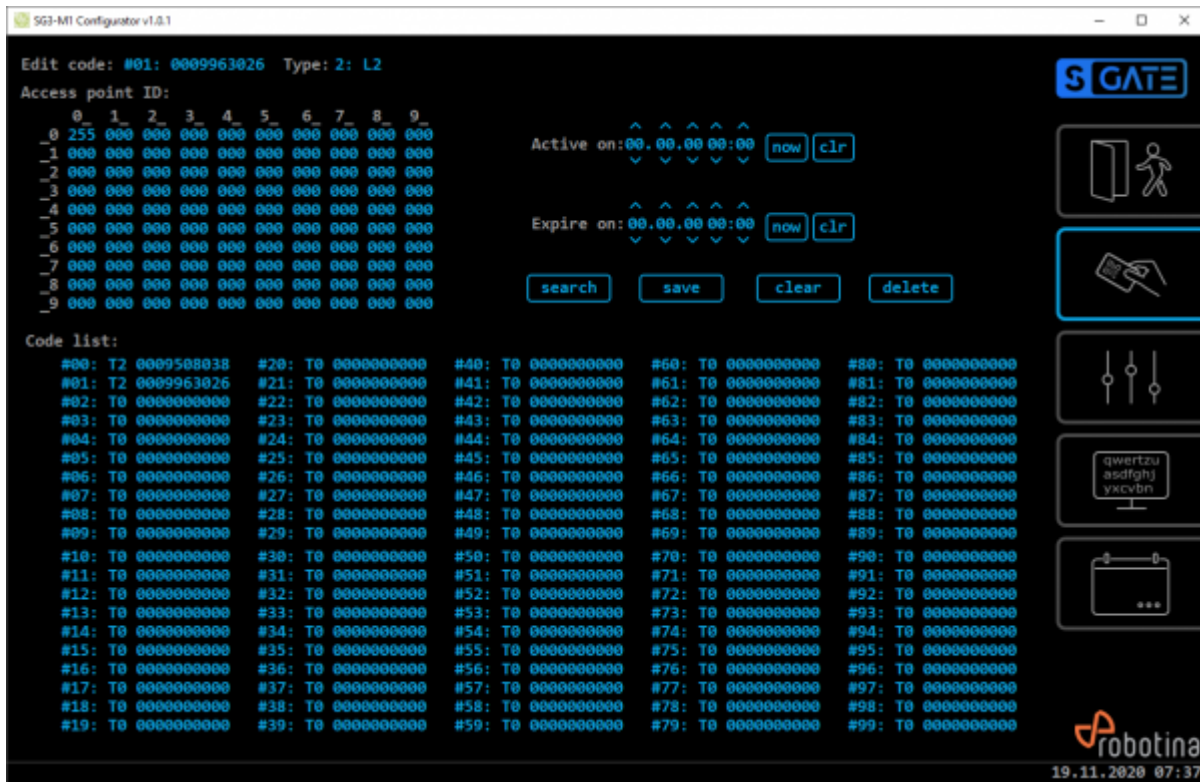
Wireless alarm socket ☒ ☒

Date and time: 19.11.2020 thu 07:36:49 x ✓

**init parameters** **save parameters** **read parameters**

**robotina** 19.11.2020 07:36

## Staff code



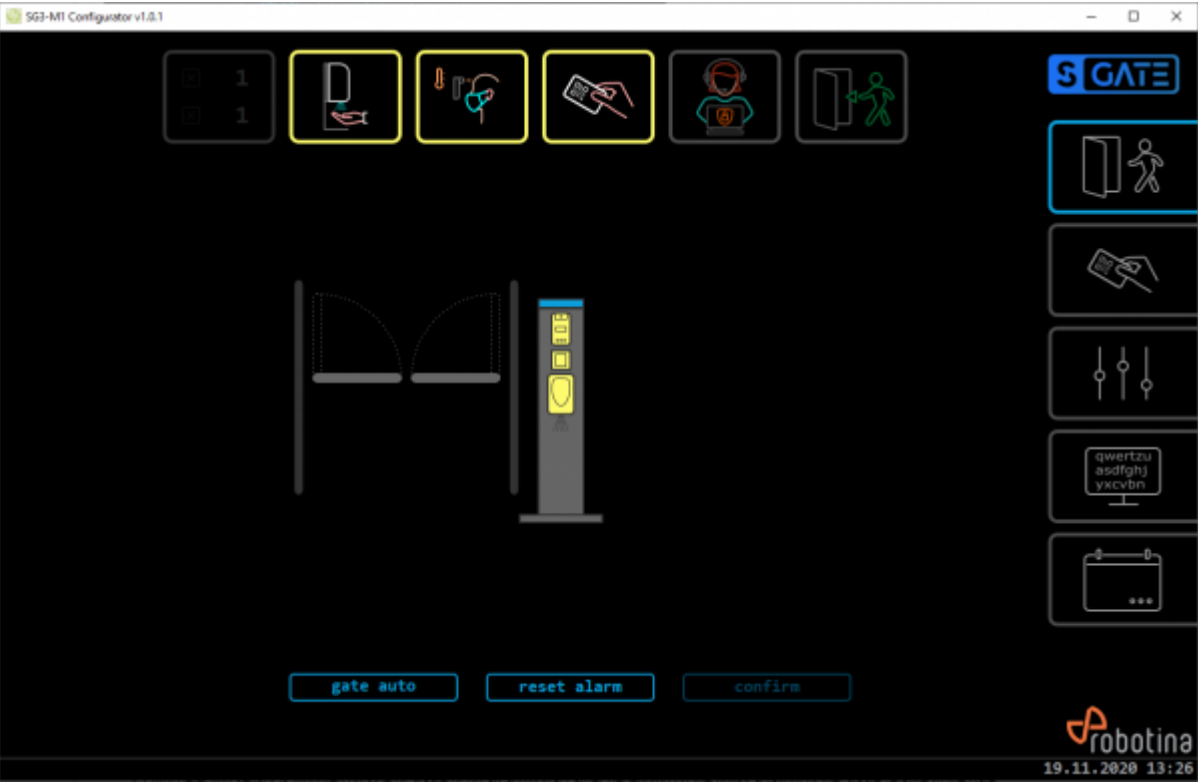
## Offices

### Requirements

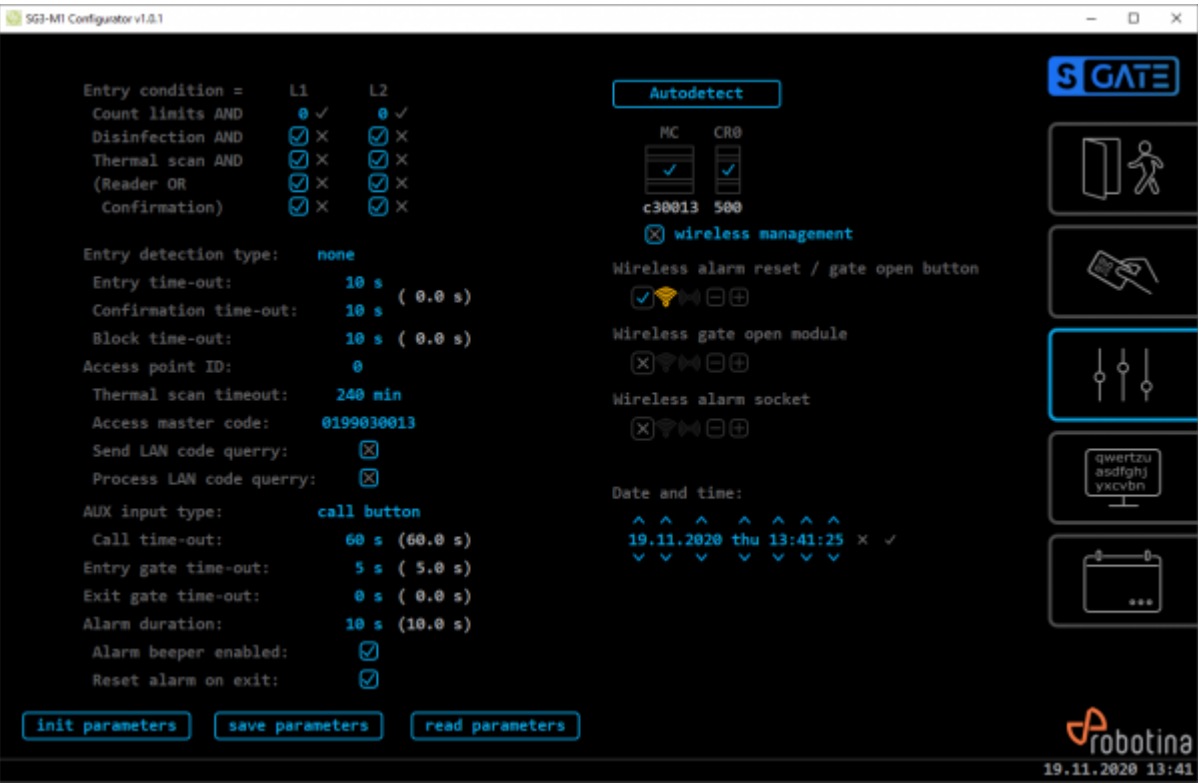
- number of visitors not limited
- one passage for access and exit
- automatic door
- required temperature measurement
- employees do not need to scan the temperature 4 hours after a successful scan
- required disinfection
- required authentication with code for employees and guests
- guests are exceptionally allowed to enter with confirmation of the reception (without code)

### Installation

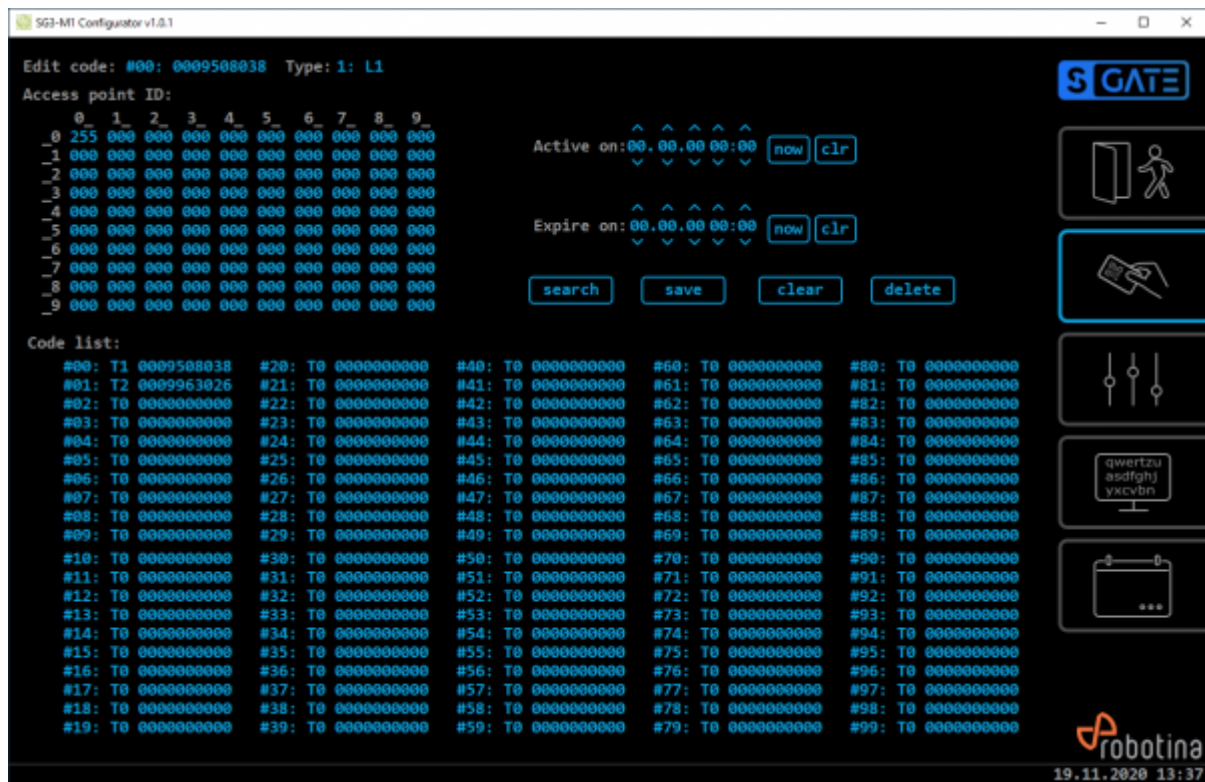
- SGate is installed at the entrance from the outside of the automatic door.
- Entry detection sensor is mounted on side of SGate or on an additional carrier depending on the physical layout of the SGate relative to the door.
- Receptionist has a wireless button or PC application to confirm alarms or to open the door manually in case of exceptions.
- Upon booking a meeting, each guest receives a QR code, which is time limited.



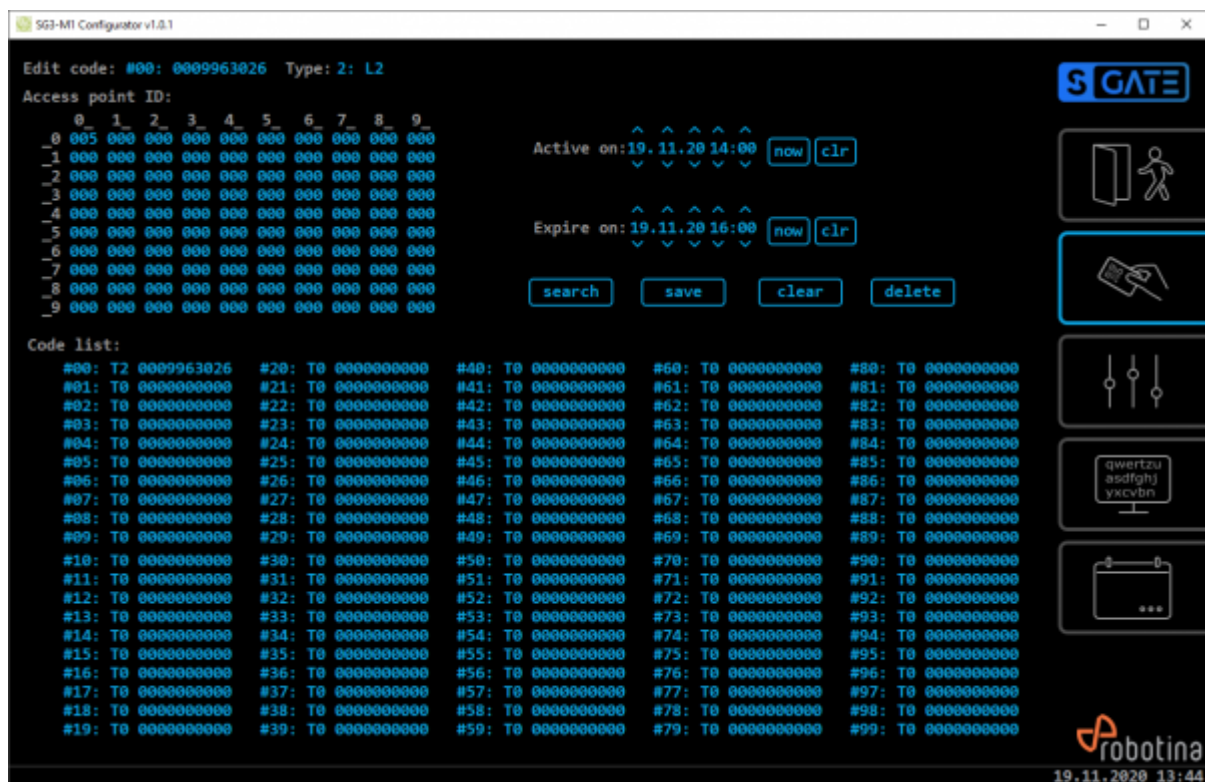
Settings



Employee code



## Guest code



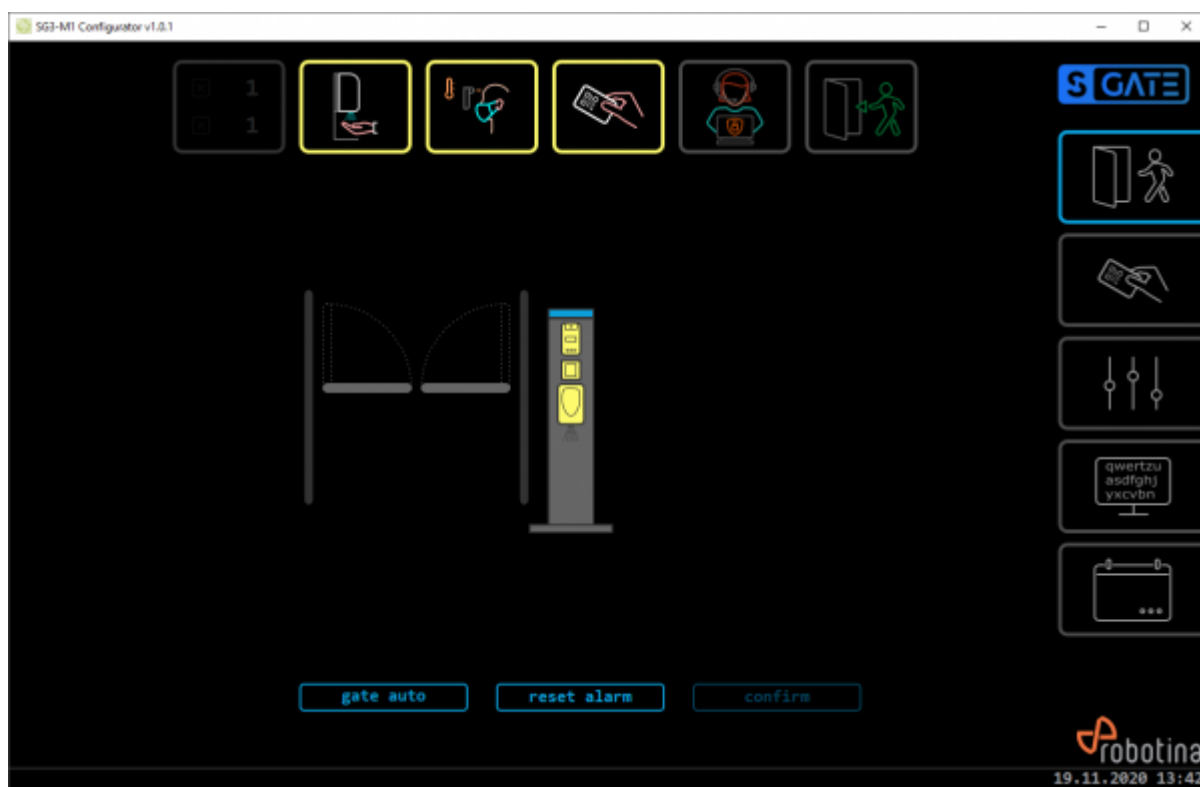
## Health Center

## Requirements

- visitors can enter only at a specified time
- one passage for access and exit
- automatic door
- required temperature measurement
- required disinfection

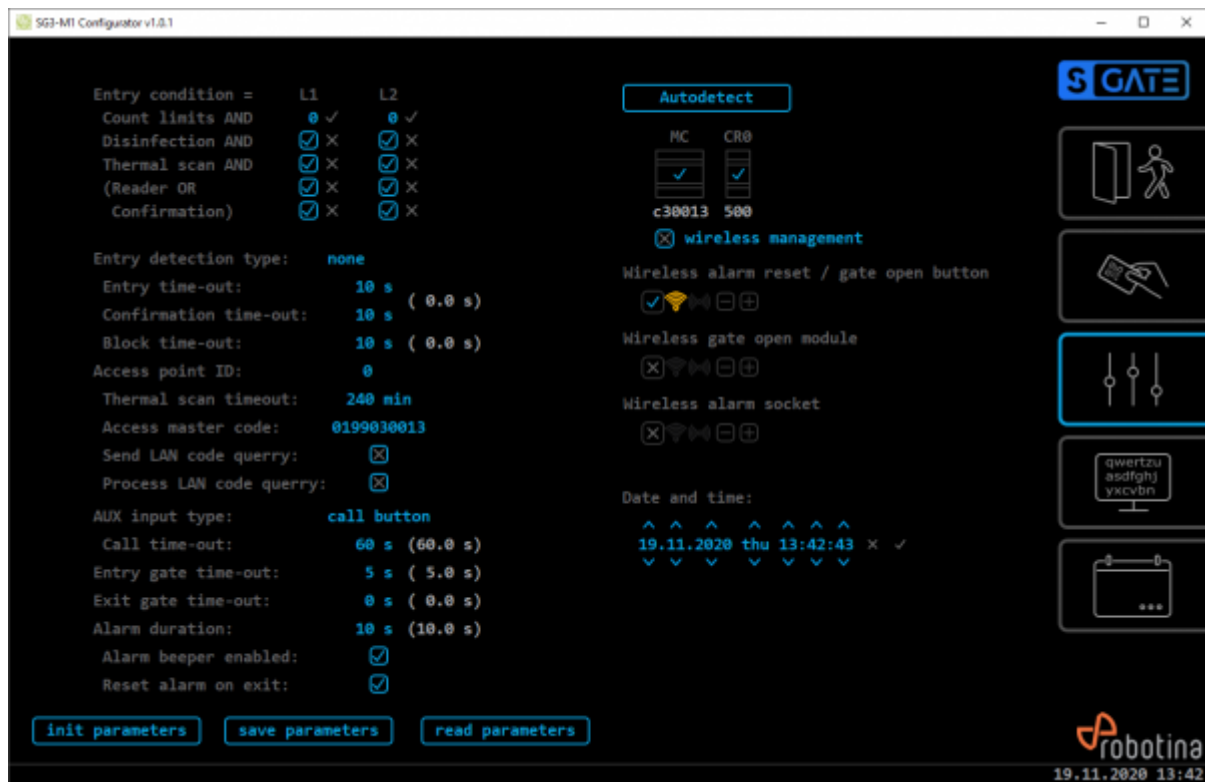
## Installation

- SGate is installed at the entrance from the outside of the automatic door.
- Entry detection sensors are mounted on side of SGate or on an additional carrier depending on the physical layout of the SGate relative to the door.
- Receptionist has a wireless button to confirm alarms or to open the door manually in case of exceptions.
- Upon booking, each visitor receives a QR code, which is time limited.

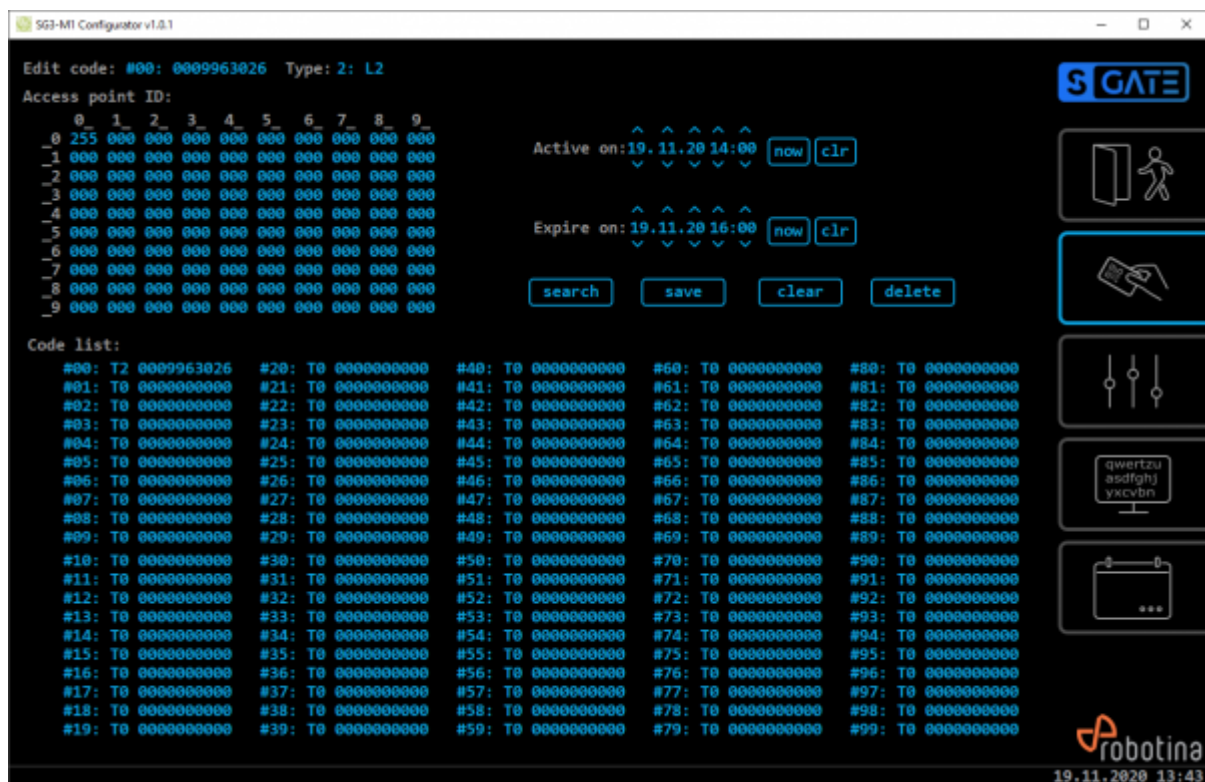


## Settings





## Guest code



From:

<http://wiki.hiq-home.com/> -

Permanent link:

<http://wiki.hiq-home.com/doku.php?id=en:sg3:installations&rev=1606474948>



Last update: **2020/11/27 11:02**