

IOT Linker 1 Ethernet Port

connected IoT devices for future connected services



Order code:	IOT-L2-1
Mounting:	DIN rail, wall
Dimensions:	47 x 52 x 30 mm
Connection:	1x Ethernet Port LAN

- Robust and safe connection of HIQ and 4S systems to HIQ Universe cloud platform.
- Secure access and communication (TLS encryption)
- Local data buffer, no data loss
- User data safety according to GDPR
- Secure remote access to HIQ MC controllers

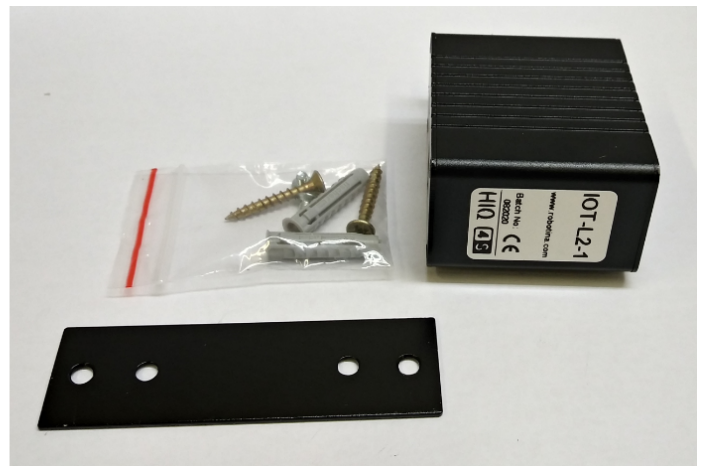
Technical specifications

Power supply: | 2 Options |

1st option:	input 100-240V AC output 5V 2.5A DC
2nd option:	input 12-24V DC output 5V 3A DC
Storage:	MicroSD x1 for external storage up to 128GB
USB Host:	1x 2.0 Type-A
Network:	1x 10/100/1000M Ethernet
Working temp.:	0°C to 40°C
4G connection :	USB
Software :	IOT linker system software is sold separately on MicroSD card

Mounting

DIN Rail or Wall



From: <https://wiki.hiq-home.com/> -

Permanent link: https://wiki.hiq-home.com/doku.php?id=iot_linker_1_ethernet_port

Last update: **2020/09/21 12:34**

