

# IOT Linker 1 Ethernet Port

connected IoT devices for future connected services



Order code:	<b>IOT-L2-1</b>
Mounting:	DIN rail, wall
Dimensions:	47 x 52 x 30 mm
Connection:	1x Ethernet Port LAN

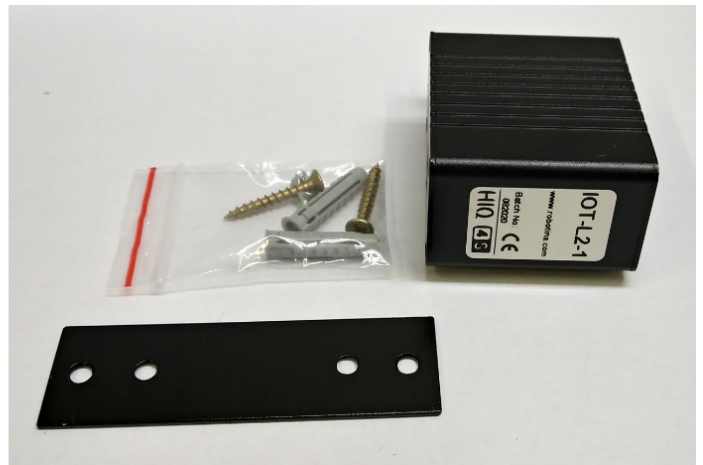
- Robust and safe connection of HIQ and 4S systems to HIQ Universe cloud platform.
- Secure access and communication (TLS encryption)
- Local data buffer, no data loss
- User data safety according to GDPR
- Secure remote access to HIQ MC controllers

## Technical specifications

Power supply:	DC 5V/2A (Micro USB)
CPU:	Allwinner H3, Quad-core Cortex-A7 Up to 1.2GHz
RAM:	DD34 512MB
Storage:	MicroSD Slot x1
USB Host:	1x 2.0 Type-A
Network:	1x 10/100/1000Mbps Ethernet
Working temp.:	0°C to 40°C

## Mounting

### DIN Rail or Wall



From:  
<http://wiki.hiq-home.com/> -

Permanent link:  
[http://wiki.hiq-home.com/doku.php?id=iot\\_linker\\_1\\_ethernet\\_port&rev=1600338044](http://wiki.hiq-home.com/doku.php?id=iot_linker_1_ethernet_port&rev=1600338044)

Last update: 2020/09/17 10:20

