

## USER MANUAL

### MULTIFUNCTION RELAY SWITCH RS1-WE-F1

**Power supply:** 230V AC 50Hz

**Switching capabilities:** 230V AC – 10A // 30V DC – 10A

**Consumption:** < 1W

**Max. Power:** 2300W

**Radio frequency range:** 868.0 to 868.6 Mhz

**RF power Max:** +3dBm

**Range:** up to 30m indoor

**Operational temperature:** -10°C to 40°C

**Protection rating:** IP 30

**Pairing:** up to 22 controllers

**EPP (EnOcean Profile):** D2-01-12

**Dimensions:** 40mm x 44mm x 16.9mm

**Weight:** 34g

**Warranty:** 2 years

#### DANGER OF ELECTROCUTION



**BEFORE ANY INSTALLATION MAKE SURE THE POWER SUPPLY IS DISCONNECTED TO AVOID ANY RISK OF ELECTROCUTION**

#### USE CAUTIONS

Never use the device if it is not correctly installed and placed inside a connecting box in conformity with the current norms.

Keep the product far away from liquids.



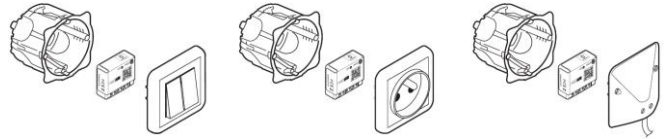
This product must be used indoor only



This product is conform to EnOcean radio protocol



#### INSTALLATION



Thanks to its compact size, the Relay Switch can be installed behind a wall switch, an electrical outlet or a cable outlet.

#### RELAY SWITCH INPUT/OUTPUT



**N** Terminal for the Neutral

**L** Terminal for the Line

**I1** Input terminal for the wired switch 1 (I1)\*

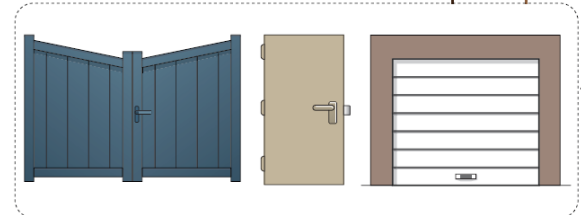
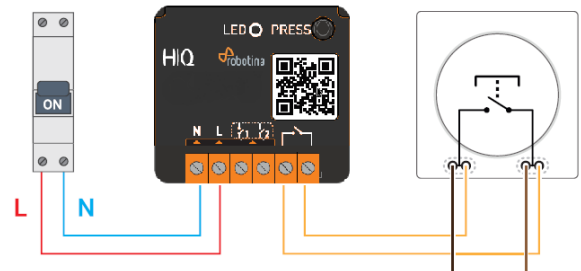
**I2** Input terminal for the wired switch 2 (I2)\*

Input terminal, the potential will pass through the output terminal

Output terminal

Each terminal can accept a cable of 2.5mm<sup>2</sup> maximum, stripped of 8mm.

#### INSTALLATION – GARAGE DOOR/ELECTRIC LATCH



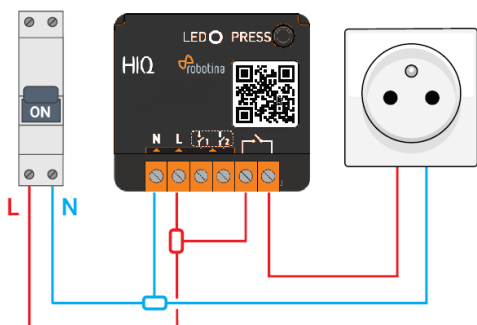
**Warning** Activate the control access mode (see the section) before pairing to avoid any damage of your equipment.

#### AUTO-DETECTION OF SWITCH TYPE

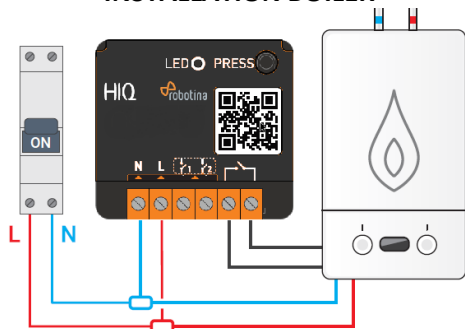
After turning the power supply ON, do a single push on the wired wall switch. The relay switch has an auto-detection system to automatically detect the type of wired wall switch (rocker or push-button) wired at the input.

**Note:** The same configuration is applied for both inputs (I1 and I2). It is not possible to combine a rocker switch with a push-button. To perform a new auto-detection, the Relay switch must be manually reset. (see reset procedure)

## INSTALLATION-ELECTRICAL OUTLET

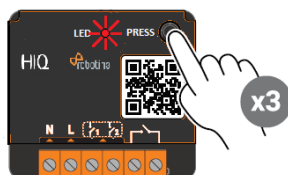


## INSTALLATION BOILER

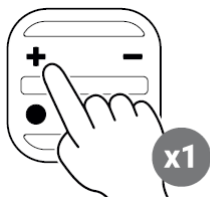


## PAIRING PROCEDURE

To add a remote or wall switch or the Soft button (EnOcean compatible) you must enter the pairing mode, your light must be switched OFF. Relay must be power supplied.



1. Launch the pairing by doing 3 consecutive presses on the relay switch button. The LED blinks red.



- 2a. You have now 30 seconds to pair your controller by briefly pressing on the button of your choice, this one will control your electrical outlet.



- 2b. You have now 30 seconds to pair your controller by doing 5 brief consecutive presses on the button.



3. The relay switch LED will blink green twice, confirming the pairing.

**NOTE:** if the LED blinks orange during the pairing procedure, it means that more than 22 controllers are paired. You must remove one controller to add a new one.

## UNPAIRING PROCEDURE

Do the same procedure as pairing and takes care of pressing the button chosen to control your electrical outlet.

## RESET PROCEDURE

Relay switch must be power supplied.

1. Press more than 5 seconds on your module's button. The LED blinks orange.
2. Press once again the button (short press) to confirm the reset. If the reset is correct the LED blinks alternatively in red and green and stays green. Start again if necessary.
3. Your module has now its original settings.

## CONTROL ACCESS MODE

It is imperative to activate the control access mode before pairing your remote/wall switch to control your electric outlet to avoid damaging your equipment.



1. Do 5 brief presses on the button of the relay switch. The LED pulses in green, confirming the activation of the control access mode.
2. You can continue the installation procedure.

## ACTIVATION OF REPEATER MODE

When the repeater mode is activated, the relay switch will repeat all the messages from EnOcean network, and so increase the range of equipment around it.

The repeater mode has 3 levels:

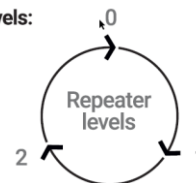
Level 0: repeater mode is deactivated

Level 1: the signal is repeated once

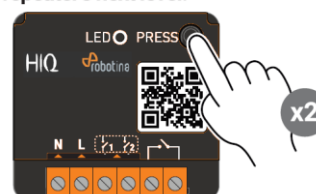
Level 2: the signal is repeated twice

**Warning:** by default, the repeater mode is at level 0.

Incrementation of the three repeater levels:



Access to repeater's next level:



To pass from one level to another, do 2 brief presses. The relay switch LED blinks to confirm the activation of the next level or the deactivation of the repeater mode

**Level 0 to 1:** LED blinks twice green

**Level 1 to 2:** LED blinks three times green

**Level 2 to 0:** LED blinks once green.